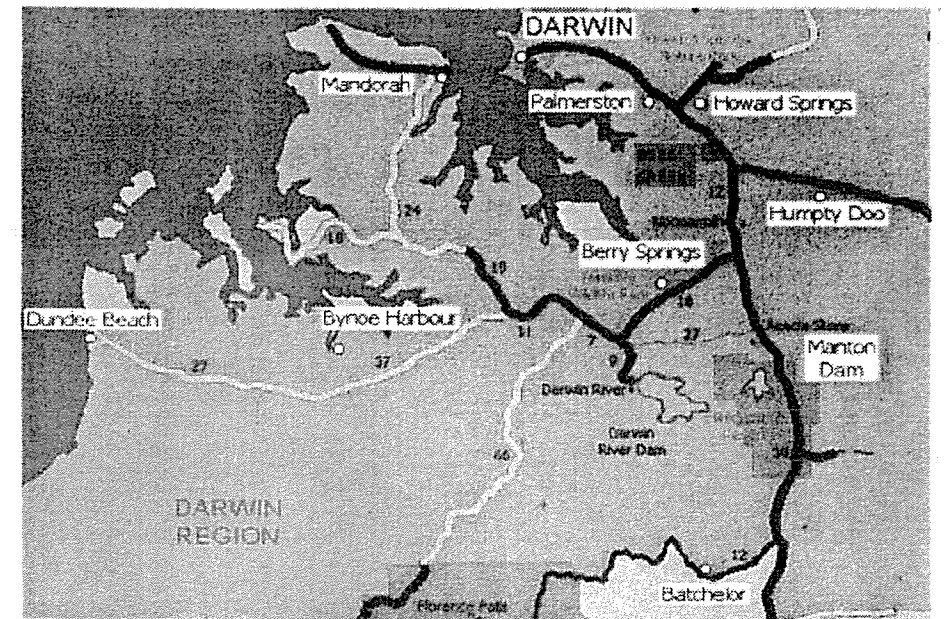
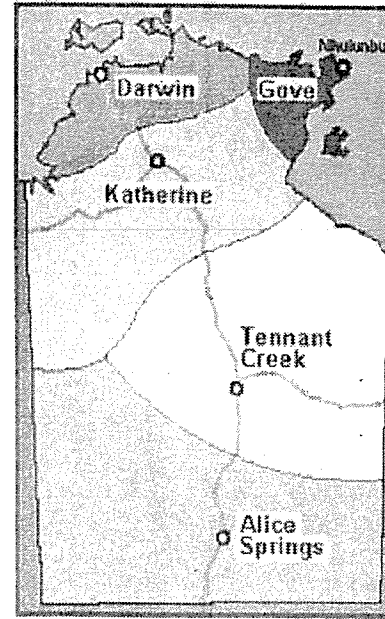
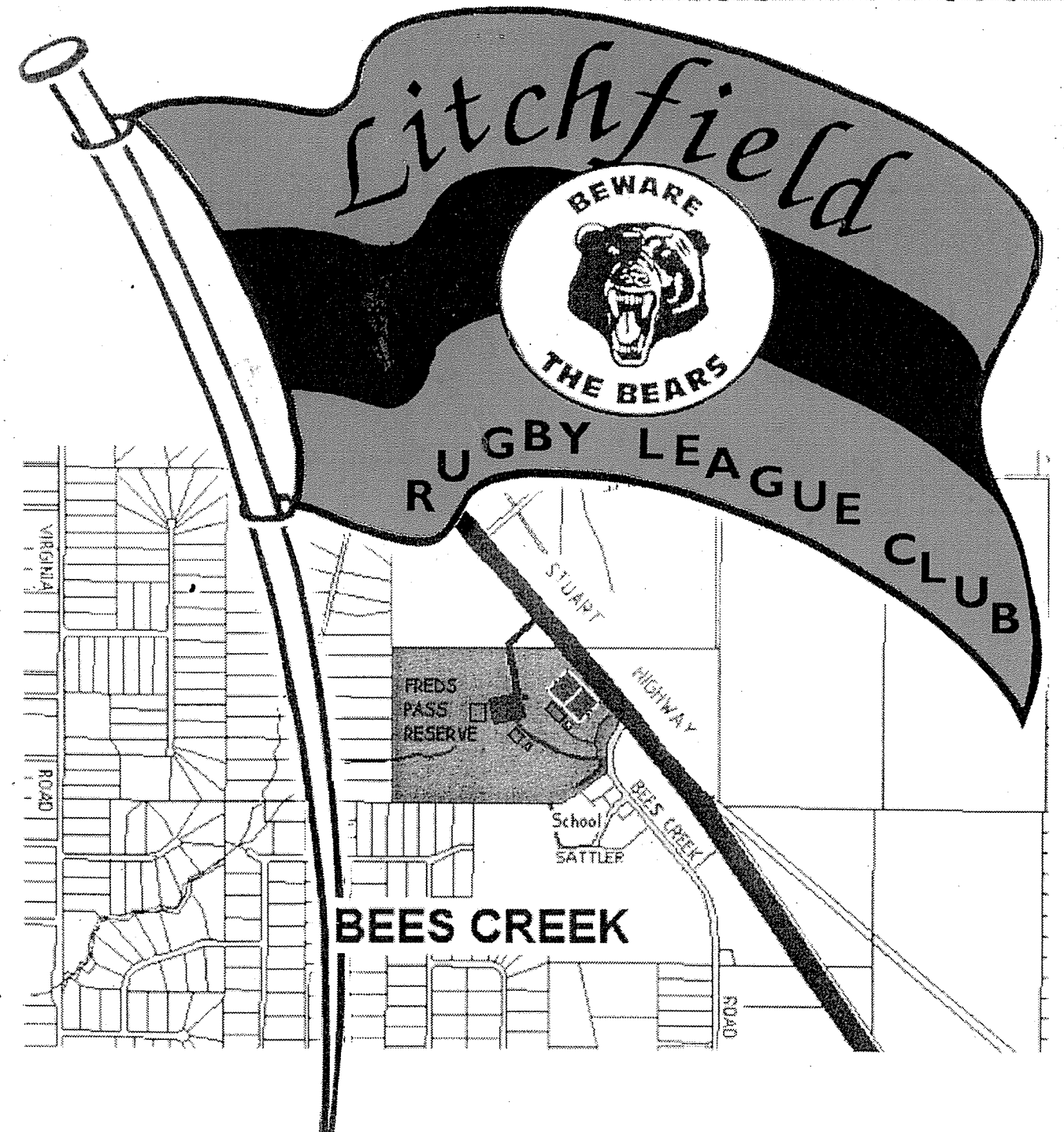
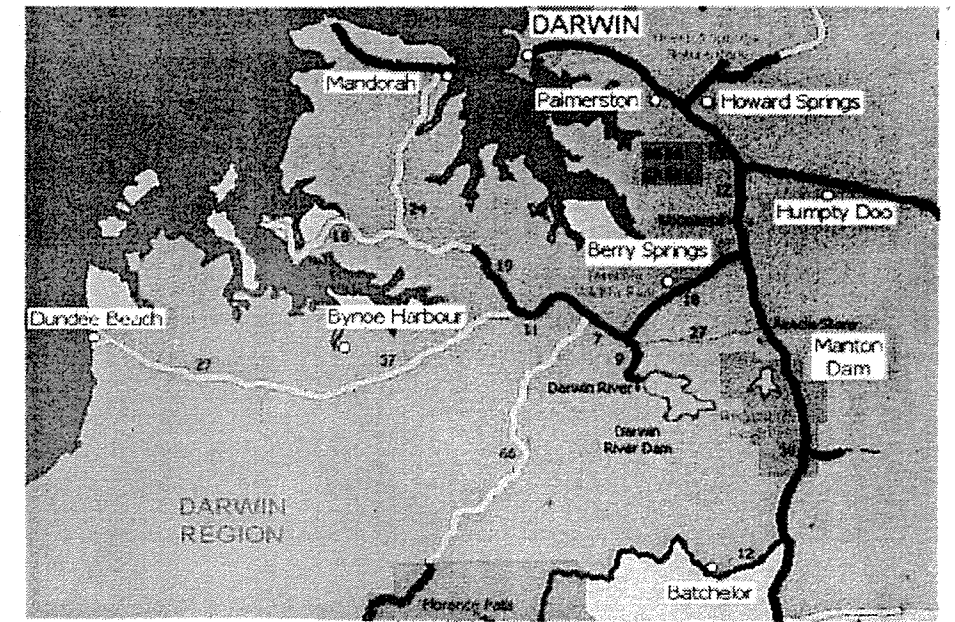
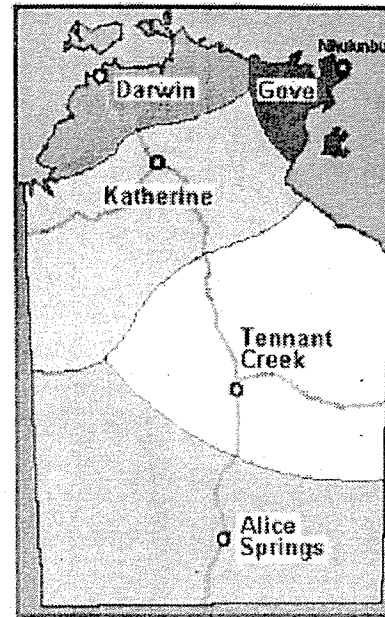


“GIVE THAT MAN A NEW”





**“GIVE THAT MAN A NEW”**





# Arnhem Printing

DARWIN'S  
QUALITY  
SCREEN  
BRINTER

1 Daniels Street Ludmilla NT 0820  
PO Box 38982 Winnellie NT 0821  
Phone: 8948 0647 • Fax: 8985 1960  
Email: arnhemp@sabresystems.com.au

*We'll screen colour for you!*

## INDEX

### EDITORIAL INFORMATION

#### Editorial Management

Paul Albion - Editor and Production  
Co-ordinator

#### Published By

Litchfield Rugby League Club Inc.  
P.O. Box 761  
Humpty Doo N.T. 0836  
Australia

ABN 36 082 849 535

#### Clubhouse & Grounds

Freds Pass Reserve  
Stuart Highway  
BEES CREEK NT

#### Disclaimer

The Editorial Management and the Litchfield Rugby League Club welcomes contributions for future publications, but points out that it reserves the right to accept, reject or sub-edit any item or articles submitted for publication and that it is not responsible for the views stated therein.

Our research has discovered that not all of the club information has been recorded and as such some details have been filled in from memory or left blank. If you have information to fill in the blanks, please contact the Editor.

We apologise in advance for any omissions or mistakes as they are not intentional.

All information provided in this booklet was deemed to be correct at the time of publication.

#### Club Contacts

President - John Bell 0413 453 142 m  
V/President - Jeff Rees 0408 895 593 m

#### Previous Publications

1993 Year Book  
1994 Year Book

#### Copyright

© Litchfield RLC 2001

All Litchfield Team Photo's courtesy of  
Brendan Manning. (Copies available)

All historical and statistical records  
compiled by Paul Albion and John  
Lawton.

## CONTENTS

Patrons Message	2
Presidents Introduction	3
Sponsors	4
Reflections on Litchfield's First 10 Years	5 - 8
1991 Season Overview & Photos	9 - 12
1992 Season-Overview & Photos	13 - 14
1993 Season Overview & Photos	15 - 18
1994 Season Overview & Photos	19 - 21
1995 Season Overview & Photos	22 - 26
Summary of Clubs Evolution	30 - 31
1996 Season Overview & Photos	27 - 33
1997 Season Overview & Photos	34 - 36
1998 Season Overview & Photos	37 - 40
1999 Season Overview & Photos	41 - 43
2000 Season Overview & Photos	44 - 47
2001 Season Overview & Photos	48 - 58
Club Honour Board	59

700 copies produced.  
Printed by Acacia Printing, Humpty Doo NT  
Ph (08) 89881260 email: acacia@octa4.net.au

Photos on front cover include Mark Buckley, Ali Carmichael, Ellie Hardwick, Kelly Barker, Micky Rees & Aaron McGregor.

Club details at the following website: [www.leagueclubs.com/litchfieldbears/](http://www.leagueclubs.com/litchfieldbears/)

Also, more local club details and Darwin Rugby League competition details can be found at the following web site: [www.sportingpulse.com.au](http://www.sportingpulse.com.au)

PREAMBLE

PATRONS MESSAGE

The Litchfield Bears have already established a proud tradition of commitment, hard work, self sacrifice and loyalty. These qualities are an integral part of being a Territorian and an Australian and when channelled through a football club by a large number of dedicated people over many years, create a GREAT club. Its timely to thank all those people (some, sadly are no longer with us) as we build on these traditions for the future.



It is a rare privilege to be the patron of such a club and a responsibility I take seriously. The past ten years have created high standards of success as well as clubmanship and have set up the Litchfield Bears Rugby League Club for a very bright future.

Chris Lugg  
Club Patron & Former MLA

NOTE FROM THE EDITOR

This publication has been produced at the request of the Litchfield Rugby League Club and is primarily intended to capture the first 10 years of club history under the name of Litchfield. The Litchfield RLC is the continuation of the Waratah-Southern Districts RLC, which changed its name, colours and emblem at the end of 1990. The origins of the club can be traced all the way back to the formation of the rugby league competition in Darwin in 1950. The club has descended from the "Wallabies RLC" which was one of the original foundation clubs. The Wallabies RLC changed its name to Waratah-Wallabies in 1965 and another change was made in 1968 when it became the Waratahs RLC. A further name change occurred in 1985 when it became Waratah-Southern Districts RLC, which brings us to the final change made at the end of 1990, to Litchfield RLC.

CLUB HONOUR BOARD

LIFE MEMBERS		
R. A. (Huck) VERRY	WALLABIES	1952
Mick BOWEN	WALLABIES	1953
Fred McMAHON	WALLABIES	1954
L. D. RICHARDSON MBE	WALLABIES	1955
A. F. (Frank) McPHERSON	WALLABIES	1956
Bob BLACKER	WALLABIES	?
Laurie (Alf) VALENTINE	WARATAHS	1969
W. K. (Bill) LLOYD	WARATAHS	?
C. F. (Frank) MAY	WARATAHS	?
Peter E. WOOD	WARATAHS	?
R. J. (John) LAWTON	WARATAHS	1976
Russel S. JOHNSON	WARATAHS	1977
Robert (Bobo) DOWIE	WARATAHS	?
John VALENTINE	WARATAHS	?
Roy J. (Peanuts) ALBION	WARATAHS	1984
Fred McCUE	WARATAHS	1984
Steve (Snake) LANGFORD	WARATAH-SOUTHERN DISTRICTS	?
Ron F. (Handles) JENSEN	WARATAH-SOUTHERN DISTRICTS	?
George EDWARDS	LITCHFIELD	1993
Janette SANDERS	LITCHFIELD	1996
Dave SANDERS	LITCHFIELD	1996
I.J. (John) ALDER	LITCHFIELD	1997
Neville "Jack" GARLAND	LITCHFIELD	2000
Tina GARLAND	LITCHFIELD	2000

LITCHFIELD  
A GRADE BEST & FAIREST

1991	Grant Pointing
1992	Anthony Matua
1993	Dean Noble
1994	Talite Liavaa
1995	John Alder
1996	John Alder
1997	Richard Troutman
1998	Peri Morunga
1999	Lance Bradley
2000	Richard Troutman
2001	Aaron Rowley

FRANK JOHNSON MEDAL WINNERS  
(DRL A Grade Best Player Award)

1988	John Alder
1992	Anthony Matua
1996	John Alder
1998	Lance Bradley

LITCHFIELD  
RESERVE GRADE BEST & FAIREST

1991	John Loveday
1992	unknown
1993	Graeme Higgingbottom
1994	Charlie Rawiri
1995	John Loveday
1996	Luke Marshall
1997	Ben Clarke
1998	Glenn Yetman
1999	Joel Tomes
2000	Brent Jensen
2001	Mark Fitzgerald

PLAYERS WHO HAVE PLAYED OVER 100 SENIOR GAMES FOR  
LITCHFIELD IN THE 10 YEAR PERIOD 1991 to 2000

(Includes Premiership matches and Finals plus Major Pre Season 13-a-side Competition matches but does not include social or modified competitions)

NAME	A Grade	B Grade	U 19/21	TOTAL SENIOR MATCHES PLAYED
John ALDER	105	2		107
Mark BUCKLEY	94	30	21	145
Joe CARBONE	145	6		151
Paul CARBONE	86	51		137
Mark FITZGERALD	119	49		168
Brenton MARSCHKE	99	41		140
Luke MARSHALL	16	122		138
Phil MATUA	99	6		105
Mike MENDOZA	103	3		106
Dean NOBLE	119	2		121
Lloyd PIERCE	83	16	21	120
Glenn YETMAN	41	49	27	117

NB. These figures do not include senior matches played under the former club names of Waratah-Southern Districts or Waratahs. Eg John Alder, who commenced playing for Waratahs in 1983, played numerous senior matches for the club under its former names and it is estimated that he would have played over 200 Senior matches for the club during his career.

DRL RESERVE GRADE  
BEST & FAIREST WINNERS

1984	Dave McWilliam
1985	Terry Forge
1989	Don Firth
1991	John Loveday
1992	Gerard Maley
1996	Glenn Yetman
1998	Glenn Yetman
1999	Brett Flaherty
2001	Mark Fitzgerald

JENSEN MEDAL WINNERS  
(most valuable junior player in club)

1987	Jamie Ryan
1988	Frank Carbone
1989	Frank Carbone
1990	Kevin Austral
1991	Lance Bradley
1992	Rhys Bradley
1993	Geoff Timms
1994	Rhys Bradley
1995	Craig Albion
1996	Ben Clarke
1997	Brett Smith
1998	Lyle Mackay
1999	Dallas Mackay
2000	Gregory Fenwick
2001	Ali Carmicheal



PRESIDENTS INTRODUCTION

As the current president of Litchfield Bears, I have been given the privilege of writing the introduction to this 10-year history of our great club. I was a founding member of the first "Litchfield Rugby League" committee and have watched with pride as the club has grown from strength to strength.

Much of the advancement can be attributed to the continued assistance of our sponsors and the tireless efforts of fundraisers, parents and coaches who give freely of their time to ensure the club's continued success. Their endeavours have underpinned those of our great players and made this club what it is today. Credit must also be given to our loyal supporters who have also played a vital role in the club's accomplishments.

From humble beginnings, we have demonstrated that this club ranks among the best that rugby league has to offer in the Territory. During the past ten years Litchfield can lay claim to having taken out five senior premierships in succession. In addition to several reserve and junior grade premierships, we have also won the Club championship for the past eight years and can take credit for having supplied a large percentage of the NTIS squad over the past few years. Truly a record for us all to be proud of.

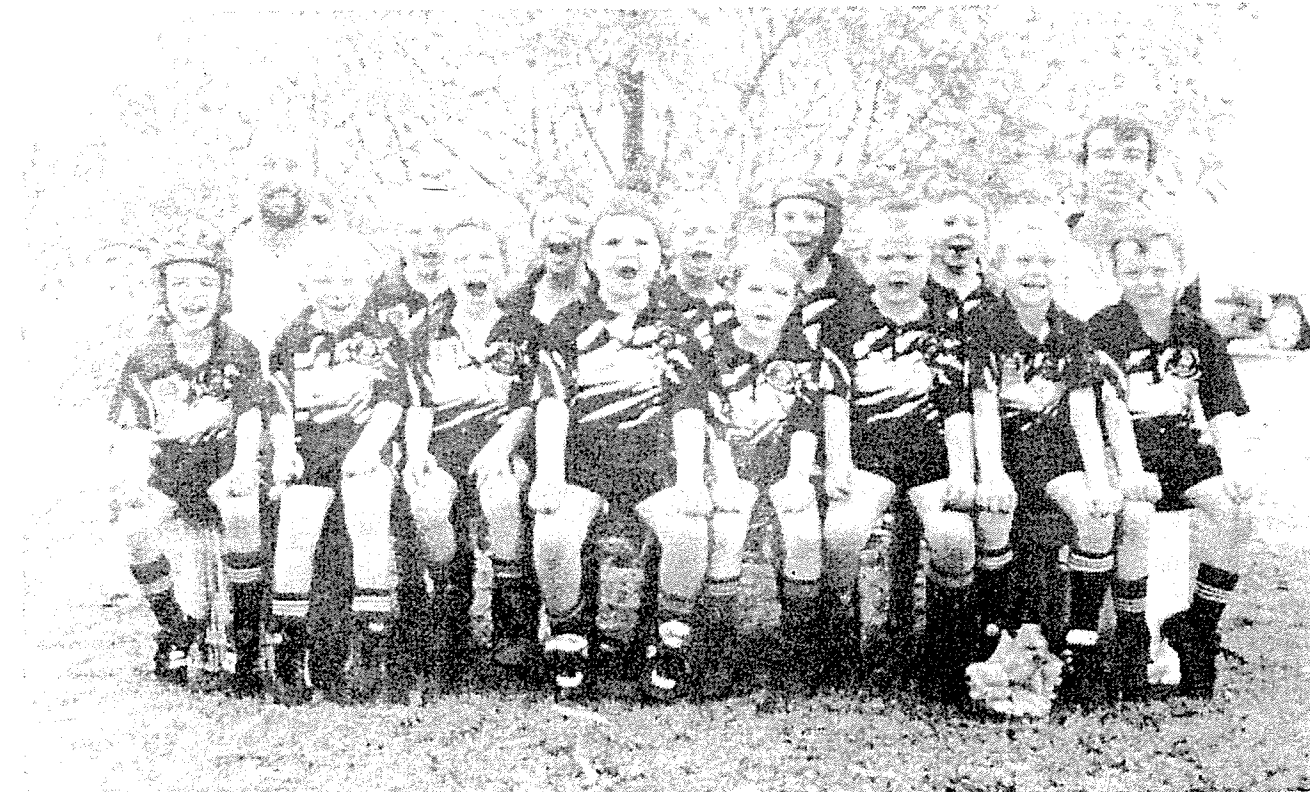
I would like to say that I am pleased to see our junior program in place although unfortunately not yet operating to its full potential. Clubs are a reflection of the quality of their players and I envisage that Litchfield's continued success lies in our ability to produce the best possible all-round rugby league sportsmen in the Territory from within our own ranks.

This history and our previous year books would not have been possible without the untiring efforts of our club historian, Paul Albion, and for this he has our heartfelt thanks. I am sure that we will all appreciate his endeavours as we join him for this trip down memory lane. The book will revive old memories for some and form the basis of future memories for others as it revisits events of the past ten years with the Litchfield Rugby League Club ... GO YOU BEARS.

John Bell  
President



2001 under 7



2001 under 6

**Ray's Hair House**  
Professional Hair Care for the whole family  
•Cuts •Colours •Perms •Foils  
**Ray Bone** Manager  
**8988 9484**  
15 Vereker Street Humpty Doo

**HUMPTY DOO PLUMBING**  
Self Certifying Plumber & Drainer  
General Plumbing Contractor  
**Greg Keogh**  
Mobile: 0408 898 491 / 0419 820 733  
**Phone/Fax 8988 2093**  
P.O. Box 85 Humpty Doo NT 0836

## SPONSORS

The club has had many great sponsors and supporters over the past ten years or so. The list below is our best recollection of the many businesses / organisations who have helped or supported the club over this period. Sincere apologies to any which have been overlooked.

### Top End Hire Services

The Freds Pass Reserve Board  
The Litchfield Shire Council  
NT Department of Sport & Recreation

Burger Place  
Roof Master

### Humpty Doo Hotel

Mackay Contracting  
JB Insurance  
Palmerston Travel  
Airpower  
Muffler City  
Territory Ford - Darwin Nissan  
North Australian Meat Industries

Npoti Garland

Henry Walker Group

### All Financial Services

BV Plumbing  
Di's Place  
Caswell Electrical  
The Bush Shop

Dave & Jan Sanders  
Meyering Constructions

### Combined Electrical

Cafe Pizza  
Grey Supermarket  
Moulden Supermarket  
Driver Supermarket  
Snowgum

Coolalinga Caravan Park  
Acacia Printing

The Litchfield Times

Humpty Doo Hardware

### Humpty Doo Newsagency

HD Pumps  
R.V. Lowrie & Associates  
Alawa Gym  
Territory Gold Orchards

J. Blackwood & Son Ltd

Humpty Doo Supermarket

The Vic Hotel

McMinn Plumbing

Fin Bins

Asian Imports

Silvio's Pizza Palmerston

Howard Springs Supermarket

The Litchfield Pub

Peter Cavenagh

Mono Pumps

Brian Barry Wines

The Palmerston Newsagency

Berrivale Orchards

### While U Wait Security Centre

Humpty Doo Pharmacy

H2O Centre

KB Wilson Golf

Humpty Doo Electrical

Oasis Beta Electrical

### Top Video

Darwin Bolt Supplies

### The Country Music Shack

Darwin Bobcat Hire

### Nightcliff Cleaning Services

Able Finance Services

### Peter Maley

Thunderbox Music

### Piening Contractors

John Bell - Project Services

### Cyclone Tree Lopping and Pruning Service

Howard Springs Bakery

### G.R.D. Civil Constructions

Coolalinga Motors

### Palmerston Self Storage

Adventure Cruises

### Pizza Hut

### Tupp Barker (Canteen)

The Litchfield Rugby Club Inc. would also like to thank the sponsors of the DRL and NTRL and the following is a list of some of the major sponsors over the past ten years:

The Australian Rugby League

The Northern Territory

Government

(Dept of Sport & Recreation)

Super League

Ansett Australia

Carlton & United Breweries

Territory Clothing

ARL Development Foundation

Zuellig Insurance

Mobil

N T Institute of Sport

Harvey Norman

QUF & Coca Cola

Castlemaine XXXX

Telstra

Channel 8

NT News

Cash Converters

Cougar Bourbon

Waste Master

Living with Alcohol

Muffler City

Leuko Plaster

Radiant Dry Cleaning

NT Catering

Thrifty Rent-a-car

Withnal Maley & Co.

Palmerston Sports Club

Hot 100

Saville Park Suites

Territory T-shirt Factory

Santa Fe' Café

Territory Track & Field

Roofmaster

Holiday Inn

Birch Carroll & Coyle

All Financial Services

Indigenuos Sports Council

PK Paving

ABC Radio

Einsteins

The club would also like to recognise the efforts of the NTRL Coaching and Development Officers and the efforts of the DRL Juniors Committee.



2001 under 9



2001 under 8





U 11 Premiership Team

Heartaches

*"We have to believe in free will. We've got no choice." Isaac Bashevis Singer*

The club has enjoyed some great times but not without a certain amount of heartache. Even during our peak times, club survival has always been a struggle and club loyalties are continually being tested. Being in the Darwin Rural Area has also had its advantages and disadvantages. To some extent it has been a deterrent for "city" players to travel to Freds Pass, even though it is only 10 or 15 minutes from Palmerston. Also, many of the young players who grow up in the rural area and play as juniors, move away after they leave school, get jobs, etc and end up living in the city areas. Many are reluctant to return to the club because of the perceived distance out of town. The concept of distance in Darwin is a parochial thing as 'down south' people will often travel great distances to training or to work each day without batting an eyelid. In Sydney or Brisbane it could take you an hour or two of solid driving or on the train or bus to get to and from work each day - this is the norm in those places and many people don't realise how lucky we are that we don't have to go to such lengths. The club does get great personal support from the rural community though, and this is where the club derives its strength. Even though the community is not rich in resources or monetary terms, the people of the Darwin Rural area are tremendously close knit and will go to great lengths to help each other out. The kids in the rural area don't always get the same access to sporting, playground, shopping or recreational facilities as their city cousins and opportunities are maximised with parents often sharing daily or weekly travelling responsibilities. Its basically the families who make it happen and fortunately there have always been enough people with the strength, enthusiasm and loyalty in this respect to keep the club going. From my own experience in this area it seems that the harder it gets for the rural community, the more determined they are to succeed and help each other out.

Myths

One of the myths, which I would like to dispel, is the notion that our club is or has been a very rich club. During the mid 90's in particular (when we were in the process of winning a record number of A Grade premierships) many people made the comment that we were a rich club. The club has never been rich in monetary terms but it has been extremely hard working and has had some great sponsors. In fact, like most other clubs we have been in the red and the black at various times over the years. Fundraising has always been hard work and times are not getting better in this respect. The club is rich in one respect though, rich in talent at all levels (committee, coaches, trainers, seniors & juniors) and many other clubs have been most envious of this fact.

As mentioned earlier, the club has had some great times but is currently experiencing a rebuilding, particularly at senior level. Both the A Grade and the Reserve Grade teams have missed the finals on only two occasions in the past ten years and for the A Grade, 2000 was the first year that they have missed out on a finals berth since their first year in 1991. This is a situation that the club will be keen to rectify. The juniors have maintained their consistency and hopefully the club will retain their loyalty in future years so that our senior teams can become the power house of Darwin Rugby League once again. The following table tells the story of the most successful Darwin rugby league club over the past decade, and although we are going through some hard times at present, statistically we are still streets ahead of most other clubs.

LITCHFIELD'S MATCH STATISTICS OVER THE PAST 11 YEARS

YEAR	A GRADE PREMIERSHIP					PLAY-OFFS		FINALS MATCHES										
	MINOR ROUND MATCHES					F	A	1 <sup>st</sup> SEMI'S		2 <sup>nd</sup> SEMI'S		PRELIMS		G. FINALS				
	W	L	D	F	A			F	A	F	A	F	A	F	A			
1991	8	7	0	391	332	4	18											
1992	10	5	0	463	324					36	18					0	28	
1993	9	6	0	410	276			22	26									
1994	13	1	1	647	200					14	34	25	10	16	14			
1995	13	1	1	628	236					48	8			23	6			
1996	9	3	0	330	142					16	48	26	22	21	6			
1997	14	4	0	588	303					25	10			28	14			
1998	18	3	0	770	250					22	18			24	18			
1999	10	8	1	458	402			16	28									
2000	8	13	0	468	503													
2001	13	5	0	608	345			24	30									
TOTAL	125	56	3	5761	3313													

Spectator Involvement

One aspect of the clubs character, which truly deserves a mention, is our spectator involvement, particularly during the nineties. We had some great players on the field however a small collection of our spectators also did us proud with their very vocal support. There is nothing more satisfying or exciting than to hear the crowd yelling support for ones team and having the team respond. It's a healthy sign when supporters are willing to cheer on the players and of course offer a bit of friendly advice to the opposition players and spectators, not to mention a few helpful hints and comments for the referees. In fact, the game will only thrive if players and spectators remain passionate about the game and officials should be careful not to extinguish this passion particularly if it is of a non-violent nature. Hopefully this tradition will continue.

**ALL FINANCIAL SERVICES PTY. LTD.**

**Looking for a one stop shop?**

Home, Motor & Business Insurance  
 Life Cover, Income Protection  
 Trauma, Superannuation, Financial Advice.  
 Personal & Business Loans, Mortgages.

Speak to the people in the know.  
 For quality service & advice call now

**(08) 8981 5900**

Email: info@afsnt.com.au

Suite 3, 70 Cavenagh Street, Darwin NT 0800

### Club Song

*"If life was fair, Elvis would be alive and all the impersonators would be dead." Johnny Carson*

While on controversial subjects, our club has not always pleased League officials and our senior club song has come under attack on numerous occasions. In these days of language enlightenment, it is surprising the fuss which can be made over a few lyrics. The clubs senior victory song is rarely used in public, being confined to the seniors change rooms or special 'seniors only' occasions. It is not used or encouraged at any junior matches or functions. Those who are unpleasantly surprised, shocked or offended by the language contained within the song have indeed had a very sheltered life. I mostly find the quality of the singing to be more offensive.

### The Future

*"If you fail to plan, you plan to fail." old saying*

Many challenges remain for the club committee, including a re-building of the senior part of the club and maintaining our quality junior program. Over the previous few years the club has been pre-occupied with the building of the club house, fund raising etc and many of the previous committee have exhausted themselves and taken a rest. It is now time for new blood to take up the challenge and continue the hard work. The clubs resources have also been depleted, however there is an infrastructure in place which only needs a little enthusiasm to make it work. As a club, we now have the best facilities of any of the local Darwin clubs.

We have expanded from 8 teams in 1991 to 15 teams in 2000. The workload has also expanded accordingly however the committee has not expanded to the same extent. Running a club this size requires a huge amount of organisation and a large number of volunteers. I would implore anyone in the rural area who has some free time during the season, to come forward and lend a hand. The club needs equipment managers, coaches, runners for water, ball boys, first aid sports trainers, etc for each team plus other support people to be involved in rostered Junior League duties, grounds set up, running the canteen, etc, etc. as well as regular committee meetings and other DRL / JDRL meetings. The club has always had a "make it happen" attitude but is currently in need of more sponsors, and people with management and organisational skills.

The pressure must also be kept on the DRL to roster more home games and to assist clubs to establish their own home grounds. If the local clubs are to become viable and strong competitors in the long term, then they must establish firm home grounds and a solid community support base. Our club has lead by example in this respect and other clubs should be encouraged to follow. The DRL should also be encouraged to reward clubs (with home games) otherwise there will be little incentive for clubs to follow.

A chain is only as strong as its weakest link and the same can be said for the League. There is little value in only having two or three strong clubs with the rest very weak. A strong League will only come from a strong competition. The stronger clubs need to share responsibility with the DRL/NTRL in being more supportive and more flexible with those clubs that need assistance. If you can make them stronger then the competition will also be stronger, if you get rid of them, then you have only achieved a smaller and a less significant competition. Improve the clubs and the League as a whole will improve also.

Unfortunately there are no short cuts, no quick fixes and success does not come out of a can. A successful club only comes about through hard work with people who expect results from their hard work. If you don't put anything into it, then you won't be disappointed if you get nothing out of it. This is a mistake, which many make. You may get some short term enjoyment out of a windfall however if you're not putting in the work then expectations wont be as high as those who are putting in the effort, and it wont be long before you're back where you started.

Running a club is a huge team effort, and all I can say is, keep up the hard work and lets make it happen again.

Paul Albion  
Former Secretary  
Litchfield RLC

**Peterson**  
Earthmoving Repairs & Maintenance  
Specialising in CAT product old and new  
Jeff Peterson | Mobile 0417 986 822  
Ph 08 8988 2459  
Fax 08 8988 5495  
24 hour service | PO Box 1635  
Humpty Doo NT 0836

 **Fin Bins**  
• Domestic Garden and Industrial Waste Removal  
• 240L Wheelie Bins • Industrial Waste Bins  
Phone/Fax (08) 8983 1574  
Mob. 0407 611 000  
PO Box 563 Howard Springs NT 0835

## 2001 Competition Teams

No A Grade Photo taken this year



U 17 Premiershship Team



U 15 Premiershship Team





**SEASON OVERVIEW (DRL SEASON No 42)**

The Litchfield Rugby League Club had its first season under this new name in 1991. In 1990, the club was called Waratah-Southern Districts and the change came after the season when the AGM was called. The new committee, under newly elected president, Dave Sanders, appointed local personality, Graeme Gow as the A Grade coach for the season and set about the task of re-establishing the club. The change of name was an emotional time and feelings/expectations were high for a successful season. In 1990 the clubs A Grade had finished last and a repeat was out of the question. The club had retained the services of many of the previous years team and had picked up a number of new players as well as having a bevy of young guns emerging from the junior ranks. On paper the squad looked very strong and they trained the house down in the preseason. As a promotion the club also enlisted the services of Steve "Blocker" Roach to visit Freds Pass for a pre season training session. Blocker's appearance was well received and the juniors were also given a rare opportunity to meet and show their skills off to one of the legends of the game. During the preseason competition the A Grade won their first 3 matches and were looking good, particularly after defeating last seasons minor premiers South Darwin and then last seasons reigning premiers Brothers in their first and second round encounters. Brothers had won three consecutive premierships at this point and were still the team to beat. Litchfield then came up against Nightcliff as hot favourites but were soundly defeated. The bears recovered to win their next match and proceed through to the preseason final against Brothers. The slightly over confident Bears were defeated by Brothers in a hard fought final 28 - 22.

The Bears started the season in brilliant fashion winning their first four matches in a row and were the competition leaders for the first half of the season. Club players like Anthony Clariage, Ray Church, Grant Pointing, Shawn Lawson, Leon Barlow and Frank Carbone were in brilliant form. As the season progressed, it became evident that five of the six clubs would be vying for the top four positions and little would separate them all season. In fact, after round 10 the top 4 were all locked on 12 points with the 5 place only a couple of points behind. At this point Litchfield was on top on percentage however wins were hard to come by and in the space of a couple of games were in 4<sup>th</sup> position, again on percentage. After the last minor round match, the top 2 teams (Casuarina and Top End Raiders) were clear at the top of the ladder with the next three (Brothers, Litchfield & South's) on equal points with percentage only separating them. As such, Litchfield was in fourth place with South Darwin in fifth place and a mid-week play-off was required to determine who would progress to the finals. The Bears had shown much promise during the season and went into the play-off as hot favourites, particularly as they had beaten Souths in each minor round match during the season. Unfortunately, the Bears were humiliated by South's 18 - 4 and were denied a place in the finals and had to settle for fifth place, only one place up the ladder from the previous season.

The Reserve Grade fared even worse by coming last, however the junior side of the club showed some glimmer of light when the Under 13's coached by Lindsay Leysley won their Grand Final against Casuarina 22 - 14. The Under 15's also made it into the Grand Final but were defeated by Nightcliff.

Season statistics (A Grade premiership matches only)

LITCHFIELD	Minor round	SCORE	Minor round	SCORE	Minor round	SCORE
verses		Litch - Opposition		Litch - Opposition		Litch - Opposition
South Darwin	1	26 - 10	6	42 - 2	11	26 - 18
Top End Raiders	2	32 - 14	7	14 - 18	12	18 - 26
Brothers	3	26 - 18	8	12 - 32	13	24 - 44
Nightcliff	4	39 - 18	9	16 - 32	14	38 - 20
Casuarina	5	22 - 26	10	38 - 26	15	16 - 28

Litchfield finished the minor rounds in 4<sup>th</sup> place on percentage and lost to South Darwin 18 - 4 in a mid-week play off to see who would progress to the finals. As such Litchfield finished the season in 5<sup>th</sup> place after the play off. South's were knocked out of the finals race by Brothers in their next encounter. Brothers went on to win the premiership after also defeating Top End Raiders 34 - 12 in the Preliminary final and then Casuarina 28 - 12 in the Grand Final.

**DRL Awards for the season:** John Loveday DRL Reserve Grade best and fairest  
Shawn Lawson DRL Rookie of the year

**Senior Players who represented either Darwin or the Northern Territory:** Shawn Lawson, Grant Pointing, Anthony Clariage & Ray Church

**International Communications & Electronics (NT) Pty Ltd**

Mr Craig Grose, Area Manager  
6/59 Reichardt Road Winnellie NT 0820  
P.O. Box 36393 Winnellie Nt 0821

Phone **61 8 8947 1200**  
Fax 61 8 8947 2822  
Mobile 0417 988 723  
Email: cgrose@iceholdings.com.au  
Website: www.iceholdings.com.au

**Core Business Activity:**  
Data & Voice Communications Cabling

**Main Products/Services:**  
Communications company specialising in supply, installation & testing of telecommunication, data & fibre optic cabling systems, wireless LAN & WAN networks, security alarms & telephone systems, additional telephone outlets and "Traffic Pro" people counters

**GO YOU BEARS**



**HUMPTY DOO**

Phone **8988 4188**

*Supporting Rugby League  
in the Rural Area*

**LITCHFIELD RUGBY LEAGUE CLUB AWARDS FOR 1991**

	<b>A GRADE</b>	<b>RESERVE GRADE</b>	<b>UNDER 19's</b>
<b>Coach:</b>	<b>Graeme Gow</b>	<b>Don Firth</b>	<b>John Lawton</b>
Best & Fairest	Grant Pointing	John Loveday	Grant Sanders
Best Forward	Ray Church	Brian Evans	Troy Steples
Best Back	Leon Barlow	John Loveday	Danny McDonald
Best Defender	Frank Carbone	Bill Squires	Grant Sanders
Most Improved	Joe Carbone	Peter Shuttleton	Cliff Hansen
Coaches Trophy	Michael Ricardo	Matt Trimms	Kevin Noakes

**JENSEN MEDAL** (Most valuable Junior player in 1991): Lance Bradley

	<b>UNDER 17's</b>	<b>UNDER 15's</b>	<b>UNDER 13's</b>
<b>Coach:</b>	<b>Murray Bradley</b>	<b>Neville Hayne</b>	<b>Lindsay Leysley</b>
Best & Fairest	Glenn Yetman	Ricky Henry	Sion Leysley
Best Forward	Lloyd Pierce	Reece Page	Gerard Bredhauer
Best Back	Cameron Blackadder	Mark Sherwood	Daniel Annetts
Most Improved	Bruce Jarmyn	Ben Harwood	Billy Joe (BJ) Thomas
Coaches Trophy	Darryl Skehan	Geoff Timms	Kirk Browning
Player of the Finals		Terry Fergusson	Clint McAuliffe

	<b>UNDER 11's</b>	<b>UNDER 9's</b>
<b>Coach:</b>	<b>Jack Garland</b>	<b>John Bell</b>
Best & Fairest	Daniel Clarke	Luke Sudan
Best Forward	Damien Thompson	Douglas Johnson
Best Back	Aaron Brennan	Darin Turner
Most Improved	Grant Clarke & Leigh Day	Dallas Mackay
Coaches Trophy	Ben Thomas	Callum Page
Encouragement Awards		Liam Manning & Andrew McCourt



**NT Mobile**  
**FLOOR COVERINGS**  
 Darwin's own mobile floor coverings specialist.  
 Guaranteed expert laying and repairs with over 23 years experience  
 Call for samples and free Quote  
 Proprietor: Glen Brown (Blue)  
 Ph/Fax: 8988 2761 Mob. 0411 296 367

Phone **8931 0005** VHF · UHF · Satellite  
 Fax **8927 0909** Antenna Systems  
**Hand ANTENNAS**  
 For all TV Reception problems  
 Multi Outlet Systems  
 Antenne Service & Repairs  
 MATV/CATV-Systems  
 Rural & Remote Communities  
 PO Box 37201  
 Winnellie 0821

**ALTERNATIVE BUILDERS PTY LTD**  
 Phone/Fax **8988 2286** Mob. **0412 895 416**  
 PO Box 76 Palmerston NT 0831  
**Tropical Concepts**  
 New House Built to your specs

**Sweet Pandora's Box**  
 Videos  
 Magazines  
 Novelties  
 Lingerie  
 Shop in Store or at Home  
 Jane Cook  
**08 8988 9270**  
 Shop 5 Humpty Doo Central  
 X-Rated Adults only

**HPM**  
 SWITCHING AUSTRALIA ON  
 For over 80 years HPM has been a leading Australian owned and operated manufacturer of quality electric products for both domestic and commercial markets.  
 HPM take pride in our service to local industry and support for our local community and sporting organisations.  
 HPM congratulates Litchfield Bears on their 10th Anniversary and all the best wishes for the future

**Barnyard TRADING**  
**Ring or call in**  
 Suppliers of  
**IRRIGATION**  
**FENCING**  
**FERTILIZERS**  
**GARDEN TOOLS**  
 Phone **8932 3997**  
 Fax **8932 2842**  
 Lot 3829-12 Mile Stuart Highway,  
 Cnr Deviney Road Berrimah.  
 PO Box 31 Palmerston NT 0831





**DRL Awards for the season:** Gerard Maley  
 Frank Carbone  
 Anthony Matua  
**Senior Players who represented either Darwin or the Northern Territory:** Frank Carbone, Ian Howcroft & Russell King

DRL Reserve Grade best and fairest  
 DRL Rookie of the year  
 Frank Johnson Medal (shared with Damien Berg from South's)

**LITCHFIELD RUGBY LEAGUE CLUB AWARDS FOR 1992**

	<b>A GRADE</b>	<b>RESERVE GRADE</b>	<b>UNDER 19's</b>
<b>Coach:</b>	<b>Ian Howcroft</b>	<b>Mark "Toad" Taylor</b>	<b>Frank Carbone</b>
Best & Fairest	Anthony "Rusty" Matua		
Best Forward			
Best Back			
Best Defender			

**JENSEN MEDAL** (Most valuable Junior player in 1992): Rhys Bradley

	<b>UNDER 17's</b>	<b>UNDER 15's</b>	<b>UNDER 13's</b>
<b>Coach:</b>	<b>Darren Honnery &amp; Graeme Gow</b>	<b>Lindsay Leysley</b>	<b>Jack Garland</b>
Best & Fairest			Ben Clarke
Best Forward			
Best Back			
Best Defender			
Most Improved			Craig Albion

	<b>UNDER 11's RED TEAM</b>	<b>UNDER 11's BLACK TEAM</b>
<b>Coach:</b>	<b>Bruce Thatcher</b>	<b>Steve Smith</b>
Best & Fairest		
Best Forward		
Best Back		
Best Defender		
Most Improved		

	<b>UNDER 9's RED TEAM</b>	<b>UNDER 9's BLACK TEAM</b>	<b>UNDER 7's</b>
<b>Coach:</b>	<b>Loyla Leysley</b>	<b>Brendan Manning</b>	<b>John Bell</b>
Best & Fairest			
Encouragement Award			
Encouragement Award			

**CE** Combined Electrical Pty Ltd

**Jeff Rees and Nelson Deuble** are proud supporters of the **Litchfield Bears**

*Congratulations to the Bears on a very successful 10 years*

Phone **08 8941 0024**  
 Fax **08 8941 0064**  
 PO Box 36020  
 Winnellie NT 0821

**PIENING REAL ESTATE PTY LTD**

**"Specialising in Rural Land Sales"**  
 Piening Real Estate is an exclusively rural agency that has been serving the rural community since 1982. We provide ourselves in our friendly and honest service and knowledge of the land.

URGENTLY REQUIRE LISTINGS IN THE RURAL AREA  
 NO ADVERTISEMENT EXPENSES  
**(08) 8983 2220**  
 Shop 7 Coolalinga Village, Stuart Highway  
 P.O Box 77 Humpty Doo NT 0836  
 Fax: (08) 8983 2285  
 Email: [piening@octa4.net.au](mailto:piening@octa4.net.au)

**FIGJAM Cleaners**  
 ABN 19 654 575 113

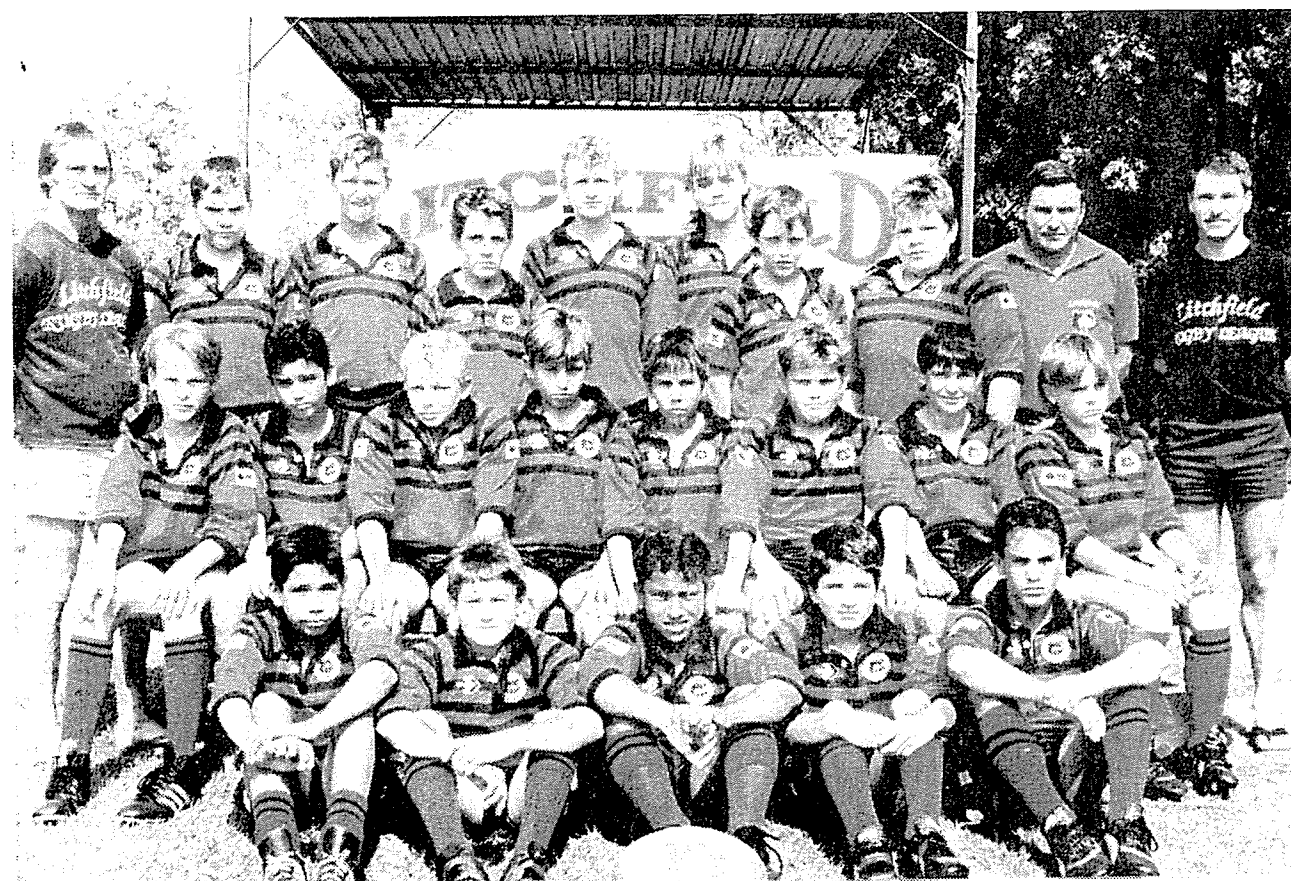
**Kerry Kennelly** Rural Domestic Cleaner  
**Ph: (08) 8988 4367 Mobile: 0407 983 635**  
 P.O. Box 1412 Humpty Doo 0836

**LARGE Chemmart Humpty Doo**

Open 7 days Mon-Fri 9-9, Sat 9-2, Sun 9-1.  
 For all medicine & prescription needs  
 Kodak Express 1 hour (best price & quality)  
 Sports strapping specialists  
 Tel/Fax **8988 2201** (opposite Woolies)



A Grade



U 13 Premiership Team

LITCHFIELD RUGBY LEAGUE CLUB AWARDS FOR 2001

"JOHN ALDER" CLUB PERSON OF THE YEAR: Jeff Rees

	<b>A GRADE</b>	<b>RESERVE GRADE</b>
Sponsor	TOP END HIRE & Humpty Doo Hotel	CYCLONE TREE LOPPING/PRUNING SERVICES & Peter Maley
Coach:	Paul Rubie	Doug Lee
Best & Fairest	Aaron Rowley	Mark Fitzgerald
Best Forward	Sion Leysley	Paul Hassell
Best Back	Mark Buckley	Mick Drury
Best Defender	Aaron Rowley	Mark Fitzgerald

JENSEN MEDAL (Most valuable Junior player in 2001): Ali Carmichael

	<b>UNDER 17's</b>	<b>UNDER 15's</b>	<b>UNDER 13's</b>
Sponsor	PIENING CONTRACTORS	TOP VIDEO & COUNTRY MUSIC SHOP	COMBINED ELECTRICAL
Coach:	Doug Lee	Mark Buckley	Brendan Fleetwood
Best & Fairest	Greg Fenwick	Aaron Barnes	Josh Dobbe
Best Forward	Roland Sohl	Nathan Tomes	Daniel McGinn
Best Back	Andrew McLean	Maslan Braun	Michael Walter
Best Defender	Ali Carmichael	David Meyering	Michael Walter
Most Improved		Greg Coghill	Sam Patrick
Coaches Award	Robert Allom	Anil Shearsby	

GARLAND MEDAL (Most valuable mod/international junior club person): Kelly Barker

	<b>UNDER 12's</b>	<b>UNDER 11's</b>	<b>UNDER 10's</b>
Sponsor	WHILE-U-WAIT SECURITY CENTRE	ALL FINANCIAL SERVICES	NIGHTCLIFF CLEANING SERVICES
Coach:	Mal Tomes	Darren Ryan	Loyla Leysley
Best & Fairest	Jac Ralph	Jake Marshall	Sean Shanahan
Best Forward	Sean Clancy	Brett Duturbure	Reece Coleman
Best Back	Micheal Treloar	Peter Hassall	Ryan Hann
Best Defender	Jake Barnes	Callum Brady	Terry Purse
Most Improved	Joe Clark	Cale Foster-Blyth	James Patrick
Coaches Award	Jac Ralph	Brendan Russell	Luke McLean

	<b>UNDER 9's</b>	<b>UNDER 8's</b>	<b>UNDER 7's</b>
Sponsor	G.R.D CIVIL CONSTRUCTIONS	PALMERSTON SELF STORAGE	G.R.D CIVIL CONSTRUCTIONS
Coach:	Rod Connelly	Jeff Rees	Romena Leysley
Best & Fairest	Aaron Craufurd	Micky Rees & Aaron McGregor	Brendan Elliot
Most Consistent	Ricky Mahan	Max Wilson	Jack Welch
Most Improved	Rohan Lawson	Scott Clark	Joel Peacock
Coaches Award	Michael McCrory	Paul Carbone	Doug McGregor

	<b>UNDER 6's</b>
Sponsor	Tup & Bobbie Barker
Coach:	Tom Opitz, Paul Kaiser & David Ferguson

Most Consistent	Patrick McCrory & Scott Willington
Most Improved	Jayden Barrett & Jake Bowman
Coaches Award	Sam Ferguson & Jack Beare



"The difference between what we do and what we are capable of doing would suffice to solve most of the world's problems." Gandhi

**SEASON OVERVIEW** ( DRL SEASON No 52 )

Although this booklet is intended to capture the first 10 years of the Litchfield RLC, the next 10 years has already started and it would not be complete if we didn't give the club a push start towards a successful future. Season 2001 started with several changes to the committee, however John Bell was re-elected president. John's committee for 2001 was as follows: Debbie Milne (secretary), Rose Baartz (treasurer), Jeff Rees (vp), Brendan Manning, Christine Fenwick, Paul Brown, Rod Connelly, Bob Brady and Luke Marshall. Brendan Manning left the committee a short time later, after being elected to the DRL Board of Directors as an independent Director (He was later expelled from the DRL Board in controversial circumstances). Paul Rubie (former -Brisbane Valleys and Litchfield Bears player and NT rep captain) was appointed A Grade coach and Doug Lee the Reserve Grade coach. Former assistant Bears A Grade coach and University A Grade coach, Lindsay Leysley, also returned to the club and took up a mentoring role. The committee embarked on a new fundraising method this season by raffling the A Grade sponsorship rights for the season (won by Top End Hire). The pre season raffle draw and club function was as a major success and gave the club a great start. The success was also helped by league legend Paul Sironen who was invited to be the guest of honour at the raffle draw and to attend training sessions the same week. Sirro's appearance was the major highlight of the preseason. The season started well for the Bears although they didn't figure in the preseason social competitions, they went on to win their first 3 premierships matches before going down to Nightcliff but recovered to win their next 4 minor round matches before going down to a fired up Brothers. Nightcliff also got the better of us again in the second round and third rounds. As the season progressed we developed some very good team work and a number of players struck some great form, particularly Arron Rowley, Mark Buckley, Dave Bolton, Joel Tomes, Sion Leysley, Daniel Clarke, Ben Thomas, Ben Clarke and Rhys Bradley when available. A bevy of young guns also impressed this season and the future looks bright with the likes of Liam McEnerney, Steve Lawford, Brian Hardwick, Shannon Cahill, Jai Shearsby and Andrew McLean moving through the ranks. Joe Carbone came out of retirement towards the end of the season to join Lloyd Pierce and Clint Storer as another prop combination in our forward pack. Three teams dominated this season, with Litchfield, Nightcliff and NTIS locked in a three-way battle for top spot. We ended third after the minor rounds, behind Nightcliff and NTIS, but injuries at the business end of the season put our finals campaign in serious doubt. The unavailability of Rhys Bradley and the knee injury to Aaron Rowley were disappointments before the finals. We went into the minor semi against Brothers fairly confident, however a number of fundamental ball control errors and a lack of urgency saw us playing catch up football for most of the game. We ended up going down 30 - 24 to finish on a disappointing note. The Reserve Grade finished as minor premiers and progressed through to the grand final with a solid 24 - 18 win over University in the second semi with only 12 men after Jackson Freon was marched after about 15 minutes into the first half. We also lost captain Mark Fitzgerald in the first half of this game, who had to be taken to hospital with a nasty gash under his eye. Unfortunately the reserves could not repeat the performance and went down 16 - 10 to University in the Grand Final. However, the juniors once again impressed with the U17's, U15's and U11's winning their grand finals.

Season statistics (A Grade premierships matches only)

LITCHFIELD verses	Minor round	SCORE		Minor round	SCORE	
		Litch - Opposition			Litch - Opposition	
	1	bye		10	bye	15
South Darwin	2	68 - 8		9	58 - 0	16
Palmerston	3	34 - 20		8	28 - 18	17
Brothers	4	26 - 24		11	16 - 34	18
Nightcliff	5	30 - 44		12	10 - 40	19
University	6	36 - 8		13	32 - 24	20
NTIS	7	26 - 8		14	24 - 20	21

NB. The DRL changed the order in which the matches were played for the second round. The minor round numbering indicates the actual order in which the matches were held.

Litchfield finished the minor rounds in 3<sup>rd</sup> position.  
Nightcliff defeated NTIS 38 - 10 in the Grand Final.

**DRL Awards for the season:**  
 Jai Shearsby Reserve Grade Most Goals  
 Jai Shearsby Reserve Grade Most Points  
 Mark Fitzgerald Reserve Grade Best & Fairest  
 Sion Leysley A Grade Golden Boot  
 Combined Tries award  
 DRL Club Champions

Senior Players who represented either Darwin or the Northern Territory: no senior rep matches this year

**SEASON OVERVIEW** ( DRL SEASON No 43 )

A smaller committee was elected at the AGM as follows: John Lawton (president), Dave Sanders (secretary), Jan Sanders (treasurer), Glenda Jensen, Neville Hayne, Lyle Mackay, Peter Youens, Kevin Page, Gavin Clarke, George Edwards, Maria Page, Shirley Hollingsworth and Don Firth. The club had gained a considerable amount of respect from the 1991 season but coach Graeme Gow had temporarily relocated to Queensland. The club had also raised enough money to engage a professional player/ coach for 1992. The club had wanted to lift its image with a high profile coach for some time, and that opportunity now presented itself. Ian Howcroft, a champion player who played first grade for Western Suburbs in the NSWRL from 1987 to 1989 and then moved to West Australia in 1990 and became WA representative captain, responded to the clubs invitation and took up a coaching offer for the next two years. He also played previously in England for Bradford Northern (1986) before moving to Western Suburbs. Although in the twilight of his playing career, he still had a lot to offer as a specialist forward and his coaching methods were to set the club on a strict training regime for several years. Up to this point, the club had not actively looked for players, and were relying mostly on local talent to fill the ranks. The club then appointed Neville Hayne as player recruitment officer, and he wasted no time searching and signing new players. Neville was to hold this position for a number of years and was responsible for signing a number of very talented high profile players for the club. One of his first signing's was Russell King from Casuarina (Frank Johnson medallist from 1991) and the club also picked up a number of new players in town Mark Pitts-Brown, Anthony Matua & Chris Ricketts. Former club juniors, Frank Carbone, Brad Rogers, Leon Barlow and Fabian Francis were also among the strong A Grade squad.

The Bears had a slow start in the preseason winning their first match against Top End Raiders and losing the next two. They started to come good with two more preseason wins and narrowly missed out on a place in the preseason final. In the season proper they started in great form winning their first match and then being narrowly defeated by Nightcliff in the second round encounter. Nightcliff had a formidable team this season, under high profile coach (and league legend) Steve Rogers, and were going to be hard to beat. The Bears went on to win their next 4 matches before again coming up against bogey side Nightcliff, who again defeated the Bears only more convincingly this time. Nightcliff were the front runners this season and Litchfield followed in second place throughout the season. The Bears lost a few matches in the latter part of the season but came home strongly at the end. One of the interesting incidents to occur this season was in the last minor round match between Litchfield and Brothers on 23/8/1992. With five minutes to go, referee Arthur Boland and the two touch judges Jason Horn and Bill Davies, walked off the field apparently in protest over undue rough play. Ian Howcroft, the Litchfield player/coach and Scott Clairage, the Brothers player/coach met briefly on the field and decided to continue with the game which was met with a huge roar of approval from the crowd. Play continued until the timekeepers blew full time. The players were then given a standing ovation as they left the field. The reserve grade ladder was almost a mirror image of the A Grade for Nightcliff and Litchfield, with the two clubs locked in the first two positions.

Finishing second in the minor rounds put the Bears up against Nightcliff in the 2<sup>nd</sup> semi finals. In A Grade, Litchfield had not beaten Nightcliff all year but that did not count in the semi final as the Bears convincingly powered their way into the grand final with a 36 - 18 win. Unfortunately the Reserve Grade were defeated in their 2<sup>nd</sup> semi final match and had to defeat Top End Raiders to make it back into the grand final. Nightcliff narrowly defeated South Darwin 26 - 20 in the A Grade Preliminary final to take their place in the grand final. In the Reserve Grade Grand Final the Bears were outclassed by Nightcliff 30 - 18 and a slightly overconfident Bears A Grade were also taken to the cleaners 28 - 0 by a resurgent Nightcliff.

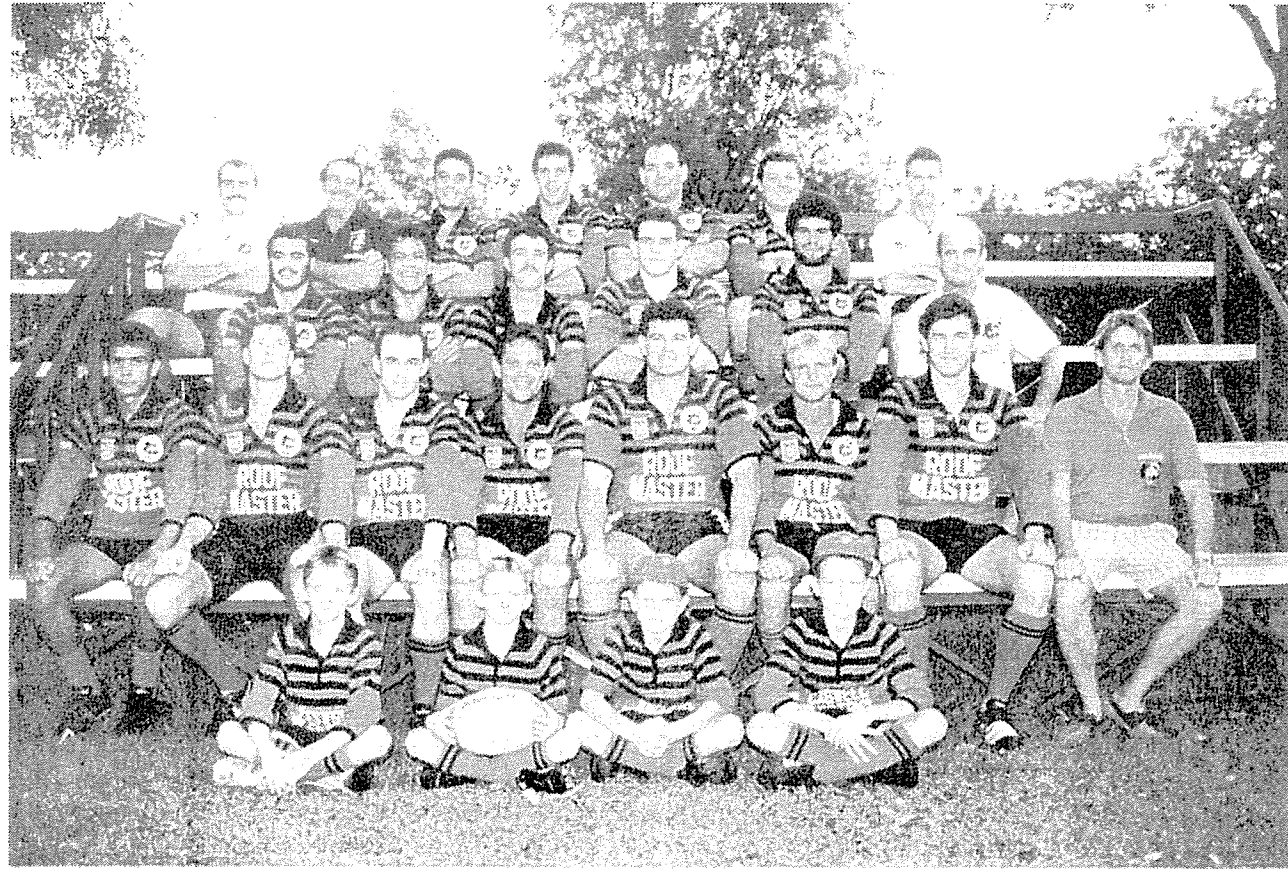
The club had come from second last and last the previous year to be second in both senior grades this season. The club also captured another junior premiership when the Under 15's won their grand final and the Under 13's were runners up in theirs. This was considered a huge improvement on the previous season and although the club was in shock after the whipping by Nightcliff in the A Grade grand final, everyone was looking forward to the following season.

Season statistics (A Grade premierships matches only)

LITCHFIELD verses	Minor round	SCORE		Minor round	SCORE	
		Litch - Opposition			Litch - Opposition	
Top End Raiders	1	23 - 14		6	20 - 16	11
Nightcliff	2	30 - 32		7	26 - 42	12
South Darwin	3	36 - 18		8	40 - 12	13
Casuarina	4	46 - 10		9	46 - 28	14
Brothers	5	50 - 6		10	14 - 34	15

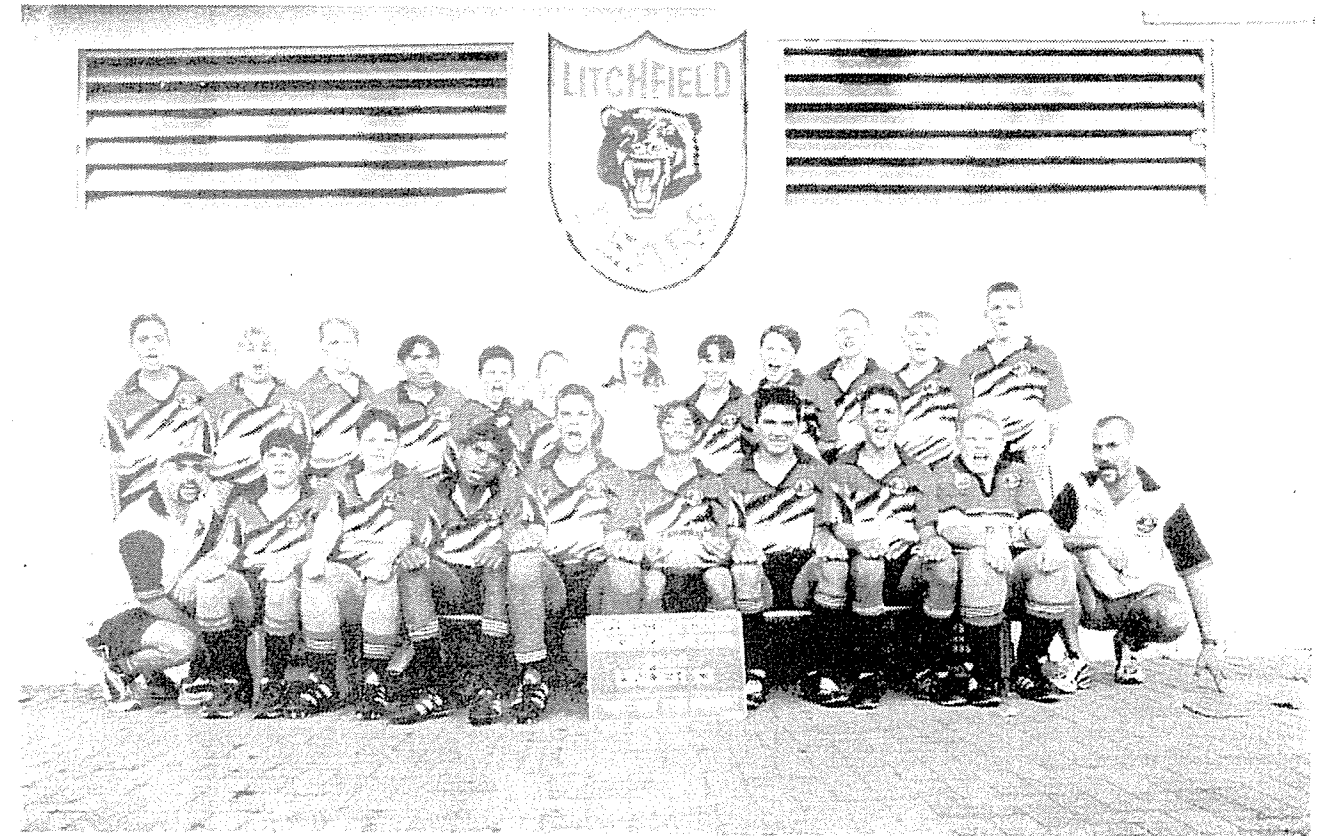
Litchfield finished the minor rounds in 2<sup>th</sup> place behind Nightcliff.  
 Litchfield defeated Nightcliff 36 - 18 in the 2nd semi final.  
 Nightcliff defeated Litchfield 28 - 0 in the Grand Final.

1992



A Grade

2000



U 13 Premiership Team



U 15 Premiership Team

# ROOFMASTER

## Metal Fabrication

### STAINLESS STEEL FABRICATION

Benches, Handrails, Sinks, Hospital Equipment, Catering Equipment, Restaurant Fitouts.

### SHEETMETAL WORKSHOP

Long length Flashing, Ridge & Louvre Ventilation, Aluminium Welding, General Sheet Metal Work, Stainless Steel Specialists, Boat repairs

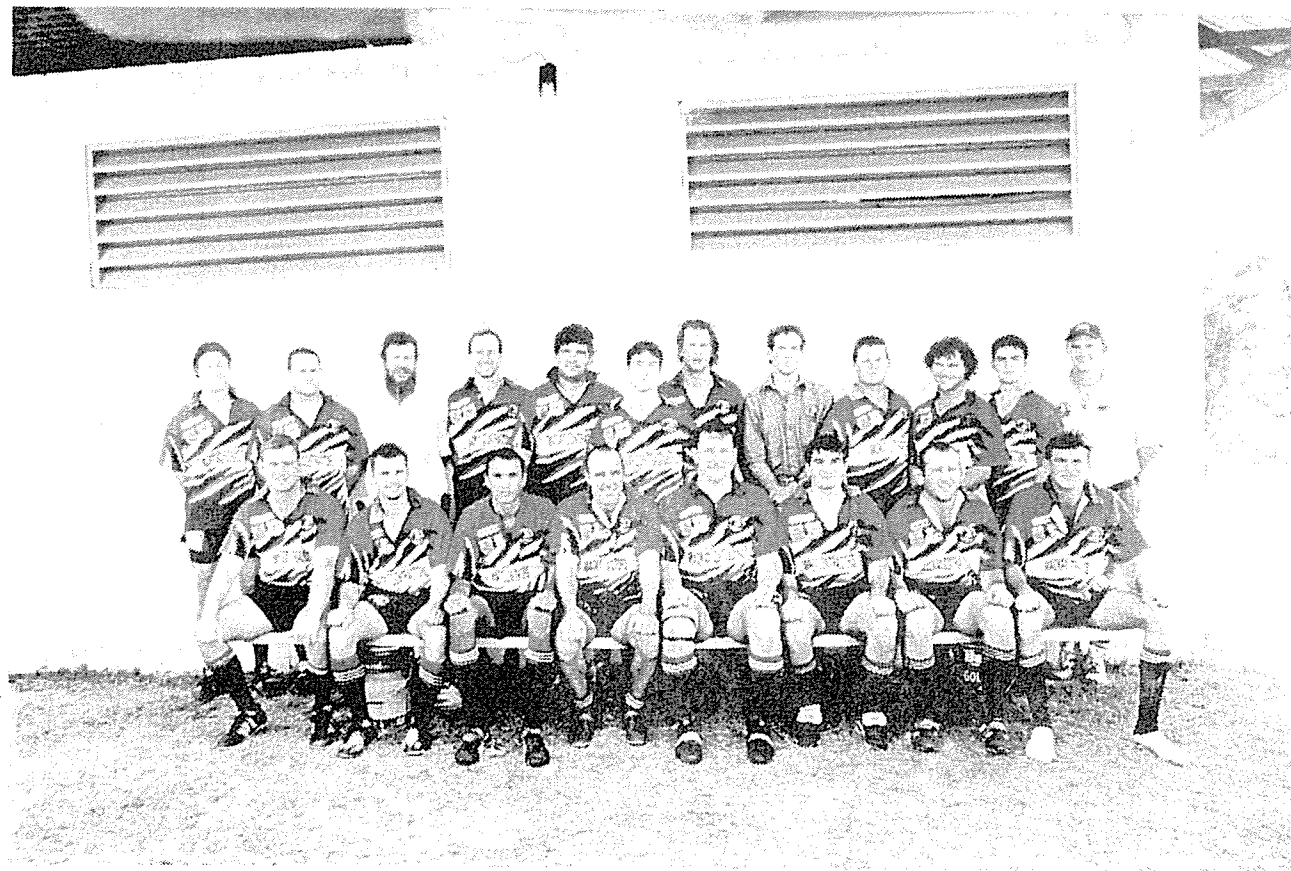
### WATER TANKS

Aquaplate Steel BHP 20 Year Warranty

# 8932 1200

Fax 8932 2146 Mobile 0418 893 026  
11 Mile Stuart Highway (Opp. BP Palms) Berrimah





A Grade



U 15 Premiershipe Team

**SEASON OVERVIEW** ( DRL SEASON No 44 )

As with all seasons, 1993 started with another AGM and a new committee. John Lawton continued as President and the other elected members were as follows: Dave Sanders (secretary), Jan Sanders (treasurer), Neville Hayne, Ronda McAulliffe, Ben & Paula Bradley, Kevin Page, George Edwards, Lyle Mackay, Peter Youens, Lee Donnelly and Gavin Clarke. Ian Howcroft accepted a second year on his contract and continued as A Grade coach for 1993. We experienced a lot of player movements this season with a large number of last years team leaving. Russell King, Shawn Lawson, Paul McGuire, Len Barton, Fabian Francis and Chris Ricketts had all left for various reasons. A few new signing's plus our upcoming juniors still gave us a strong squad to work with. New players included Dean Noble, Steve Message, Mike Mendoza, Mike Coghlan and Talite Liavaa. Phil Matua also arrived to join up with his brother Anthony. These players, plus local talents Brad Rogers, Brenton Marschke, Joe Carbone, Richard Roe, Rod Keelan, Mark Buckley, Brad Richardson, Gerard Maley, Mark Fitzgerald and Bruce Jarmyn made up most of the A Grade squad. John Alder also transferred from Alice Springs mid-way through the season.

For the seniors, this was to be a disappointing season as they showed so much promise, however the hunger for a premiership was just not strong enough. A misunderstanding towards the end of the season resulted in Ian Howcroft missing qualifying for the final series by not playing a sufficient number of minor round matches. This was to be Howie's last season as a player and although he was plagued by a knee injury, he had paced himself and played a number of matches in an effort to qualify. Unfortunately, the club miscalculated the number of matches required and although fit to play, he was unable to take his place on the field in the semi final. This was a bitter blow which dampened the enthusiasm of the team and they bowed out in the first semi against Brothers 26 - 22. Reserve Grade suffered a similar fate also going down to Brothers 24 - 11 in the first semi final.

The juniors however were on fire. The DRL had changed the format for this season from odd year grades (U17, 15 & 13's) to even year grades (U18, 16 & 14's) and the club won premierships all three divisions to set a new standard in the junior league.

Season statistics (A Grade premiership matches only)

LITCHFIELD verses	Minor round	SCORE Litch - Opposition	Minor round	SCORE Litch - Opposition	Minor round	SCORE Litch - Opposition
Nightcliff	1	4 - 66	6	18 - 22	11	26 - 14
Brothers	2	42 - 20	7	14 - 16	12	24 - 18
Casuarina	3	26 - 16	8	64 - 2	13	70 - 0
Top End Raiders	4	6 - 13	9	16 - 26	14	16 - 19
South Darwin	5	34 - 22	10	16 - 6	15	34 - 18

Litchfield finished the minor rounds in 4<sup>th</sup> place.  
 Brothers defeated Litchfield 26 - 22 in the 1<sup>st</sup> semi final.  
 Top End Raiders defeated Nightcliff 21 - 6 in the Grand Final

**DRL Awards for the season:** nil

**Senior Players who represented either Darwin or the Northern Territory:** Anthony Matua, Talite Liavaa, Brad Rogers & Mike Mendoza. NB. John Alder also represented Alice Springs.

**Jim's Top End Fresh**  
 Striving for Excellence  
 Phone 8983 4000 Fax 8983 3850  
 P.O. Box 702 Palmerston NT 0831  
 Email jimstopenfresh@octa4.net.au

**TASTY CHANGE**  
 A fresh alternative  
 Dine in or Take-away  
 Cappuccino, hamburgers, cold drinks  
 Now with Pizza Haven pizzas Open 8am - 9pm Mon - Sat  
**8988 9770**

LITCHFIELD RUGBY LEAGUE CLUB AWARDS FOR 1993

CLUB PERSON OF THE YEAR: John Bell

	A GRADE	RESERVE GRADE	UNDER 21's
<b>Coach:</b>	Ian Howcroft	Norm Taylor	John Lawton
Best & Fairest	Dean Noble	Graeme Higgingbottom	Mick Cunnington
Best Forward	Dean Noble	Luke Marshall	Trevor Fish
Best Back	Anthony Matua & Brad Rogers	Brian Evans	Damien Connor
Best Defender	Telite Liavaa	Phil Battye	Glenn Yetman

JENSEN MEDAL (Most valuable Junior player in 1993): Geoff Timms

	UNDER 18's	UNDER 16's	UNDER 14's
<b>Coach:</b>	Wes Nagas	Lindsay Leysley	Jack Garland
Best & Fairest	Darryl Skehan	Rhys Bradley	Ben Clarke
Best Forward	Brad Dillon	Lee Peters	Jamie Creagh
Best Back	Richard Roe	Jason Crews	Justin Clayton
Best Defender	Leigh Fidders	Sion leysley	Ben Evans
Most Consistent		Nigel Barker	Ross Johnstone

	UNDER 12's RED TEAM	UNDER 12's WHITE TEAM
<b>Coach:</b>	Bruce Thatcher	Wayne Brennan
Best & Fairest	Andrew MacLean	Matthew Burke
Best Forward	Lyle Mackay	Tekeppa Russell
Best Back	Artie Wilks	Aaron Brennan
Best Defender	Jackson Crews	Matthew Burke
Most Consistent	David Collins	Bradley Seymour

	UNDER 10's RED TEAM	UNDER 10's WHITE TEAM	UNDER 8's
<b>Coach:</b>	Brendan Manning	Loyla Leysley	Steve Smith
Best & Fairest	Ben McCasker	Callum Page	Stephen Lawford
Encouragement Award	Steven Lewis	Scott Seymour	Gregory Fenwick
Encouragement Award	Steven Guinane	Michael Hayne	Rebecca Seymour

	UNDER 7's RED TEAM
<b>Coach:</b>	Bob Cahill
Best & Fairest	Matthew Roe
Encouragement Award	Darien Lee
Encouragement Award	David Meyering

UNDER 7's  
WHITE TEAM

Mal Tomes

Rikki Dudley  
Luke Dunkerton  
Martin Corrie

RURAL RESULTS HEALTH & FITNESS CENTRE

Email: ruralresults@octa4.net.au

**Rural Results:**  
*It's a Lifestyle Choice...*

- Personalised Attention • Relaxed Atmosphere
- Ongoing Support & Guidance
- Excellent Customer Service
- Combat • Pump • Balance • Gym • Aerobics

**8988 1402**

Rural Results, 11 Vereker Street Humpty Doo NT

LITCHFIELD RUGBY LEAGUE CLUB AWARDS FOR 2000

"JOHN ALDER" CLUB PERSON OF THE YEAR: Mark Buckley

	A GRADE	RESERVE GRADE
<b>Coach:</b>	Brad "Marbles" Bates	Frank Carbone
Best & Fairest	Richard Troutman	Brent Jensen
Best Forward	Mark Buckley	Paul Hassall
Best Back	Ben Clarke	Daniel Clarke
Best Defender	Joel Tomes	Brent Jensen

JENSEN MEDAL (Most valuable Junior player in 2000): Gregory Fenwick

	UNDER 17's	UNDER 15's	UNDER 13's
<b>Coach:</b>	Doug Lee	Paul Rubie	Darren Ryan
Best & Fairest	Liam McInerney	Greg Fenwick	Kieran Withnall
Best Forward	Robert Allom	James Manski	Kieran Withnall
Best Back	Jai Shearsby	Bruce Manski	Bradley Talbot
Best Defender	Andrew McLean	Greg Fenwick	Ben Pulman
Most Improved	Brian Hardwick	Nathan Tomes	Mazlon Braun
Coaches Award	Ali Carmichael	Darien Lee	Bryce Finck

	UNDER 12's	UNDER 11's RED TEAM	UNDER 11's BLACK TEAM
<b>Coach:</b>	Brendan Fleetwood	Pat Brown	Terry Fox
Best & Fairest	Michael Walter	Jake Marshall	Jac Ralph
Most Consistent	Adam Foster	Michael Treloar	Sean Clanchy
Most Improved	Wayne Peterson	Ben Robinson	Brad Cox
Coaches Award	Tom Rees	Kael Brady	Rohan Connelly

	UNDER 10's RED TEAM	UNDER 10's BLACK TEAM
<b>Coach:</b>	Rod Connelly	Mark Buckley
Best & Fairest	Peter Hassall	Geoffery English
Most Consistent	Gavin Brown	Daniel Dickinson
Most Improved	Michael Fogarty	Michael Elphick
Coaches Award	Elle Hardwick	Michael Fortiades

	UNDER 9's RED TEAM	UNDER 9's BLACK TEAM
<b>Coach:</b>	Greg Owen	Michael Rivers
Best & Fairest	Dylan King	Christian Kennedy
Most Consistent	Daniel King	Aaron Rivers
Most Improved	Nathaniel Johnson	Luke McLean
Coaches Award	Ryan Hann	John Leary

	UNDER 8's RED TEAM	UNDER 8's BLACK TEAM	UNDER 7's
<b>Coach:</b>	Bob Brady	Paul Brown	David Craufurd
Best & Fairest	Aaron Craufurd	Eamon Clanchy	James McKenzie
Most Consistent	Callum Wilson	Daniel Banks	Ethan Hann
Most Improved	Thomas Day	Colby Luchich	Brody Race
Coaches Award	Sam Foster	Ricky Mahan	Hayden Fleetwood



**SEASON OVERVIEW (DRL SEASON No 51)**

Season 2000 started with a change of direction for the Bears as the club elected a new President in John Bell. Long time former president Lyle Mackay declined to contest the position at the AGM and retired from the committee. John's committee for 2000 was as follows: Carol Smith (secretary), Christine Fenwick (treasurer), Pat Brown (vp), Sue Meyering, Brendan Manning, Dave Bulte, Bill Allom, Paul Rubie, Bob Cahill & Mal Barnes. The club had fallen on hard times over the past couple of years and John was faced with a major re-building exercise. Financially the club was broke after heavy commitments towards the clubhouse and other normal running costs. Long time A Grade coach, Dean Noble had also announced his intentions to return to New Zealand and was unavailable for 2000. A number of players had also retired or left and the NTIS had recruited a large number of the clubs prominent juniors. Fortunately, the Reserve Grade coach from 1999, Brad "Marbles" Bates agreed to take on the A Grade coaching position and stay in Darwin for another year.

It was clear from the onset that the senior part of the club would have to dig deep to be competitive this season. The club then appointed a new Reserve Grade coach in Frank Carbone. Frank was a former junior and senior player for the club in the early 90's before having a stint as A Grade coach of South Darwin in 1997. His return was the major highlight at the beginning of the season.

The Bears started the season well, winning their two minor round matches in the short preseason competition however missed a place in the final (on percentage) despite being undefeated. In the competition proper, they also got off to a reasonable start winning 4 of their first 6 matches, however the pickings became a lot thinner after that. A number of injuries also added to the problem with Todd Harley finishing his season prematurely after being in brilliant form early, also coach Brad Bates breaking his leg to shorten his playing career.

Club captain Richard Troutman and young guns Ben & Daniel Clarke, Joel Tomes, Aaron Brennan, Reece Page, Brad Dillon, Justin Clayton and Bradley Feeney had to shoulder a lot of responsibility this season. They were assisted by seasoned campaigners Mark Buckley, Paul, Joe and Frank Carbone, Mick Drury, Paul Hassall, Mark Fitzgerald and Scott Krum plus newcomers Phil Hunt and Craig Warry. Despite their poor form in the middle of the season, the club was well placed to make it into the finals. We failed to capitalise on critical matches at the end of the season, where we should have won comfortably. As such, the club failed to make it into the finals and were placed sixth overall. One of the highlights of the season was in minor round 12, against Brothers on 8/7/00, when all three Carbone brothers (Paul, Frank and Joe) each scored a try.

The Reserve Grade fared much better and finished the season in second position behind Nightcliff. They upset Nightcliff 26 - 10 in the second semi final to get into the grand final however couldn't repeat the performance in the grand final and went down 20 - 16 after the Dragons scored a run away converted try right on the bell to clinch the match.

Again, the juniors brought home the bacon by winning the Under 15 and Under 13 premierships.

NB. Towards the end of the year and after the season had finished, the club was deeply saddened when long time clubman and stalwart Jack Garland passed away after an unsuccessful fight against cancer. Jack was a close friend and spent many years coaching and nurturing the clubs juniors and will be remembered through a new club award, which the committee decided to introduce in 2001.

Season statistics (A Grade premiership matches only)

LITCHFIELD verses	Minor round	SCORE		Minor round	SCORE	
		Litch - Opposition	Opposition - Litch		Litch - Opposition	Opposition - Litch
University	1	20 - 26	8	10 - 18	15	12 - 26
Nightcliff	2	14 - 32	9	12 - 34	16	22 - 29
Katherine	3	28 - 22	10	4 - 54	17	22 - 26
Palmerston	4	66 - 8	11	44 - 18	18	60 - 4
Brothers	5	30 - 10	12	16 - 24	19	18 - 14
NTIS	6	18 - 16	13	0 - 20	20	12 - 40
South Darwin	7	8 - 22	14	20 - 18	21	32 - 42

Litchfield finished the minor rounds in 6<sup>th</sup> position.  
Nightcliff defeated University 38 - 6 in the Grand Final.

**DRL Awards for the season:** DRL Club Champions

**Senior Players who represented either Darwin or the Northern Territory:** Mark Buckley  
**Page 44**



**A Grade**

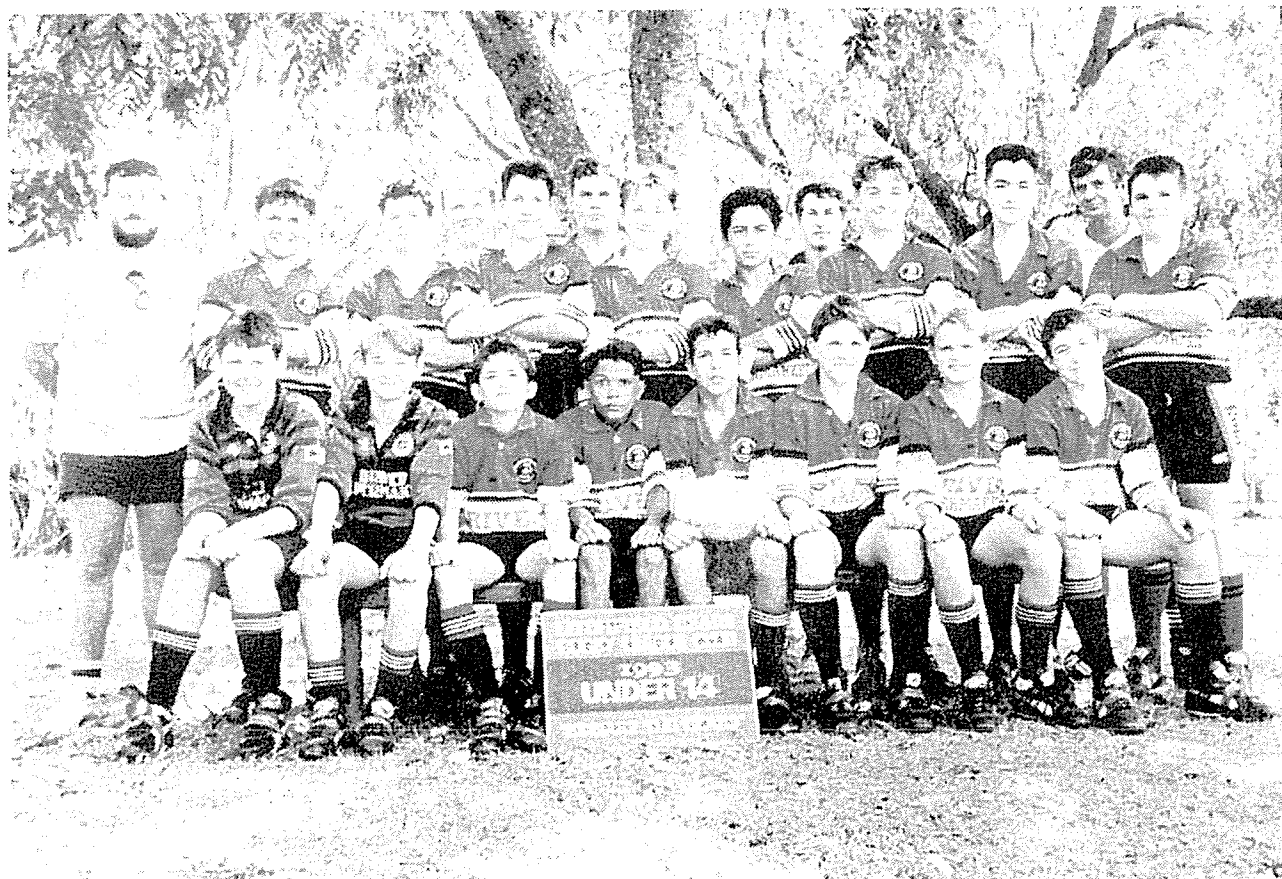


**U 18 Premiership Team**

1993

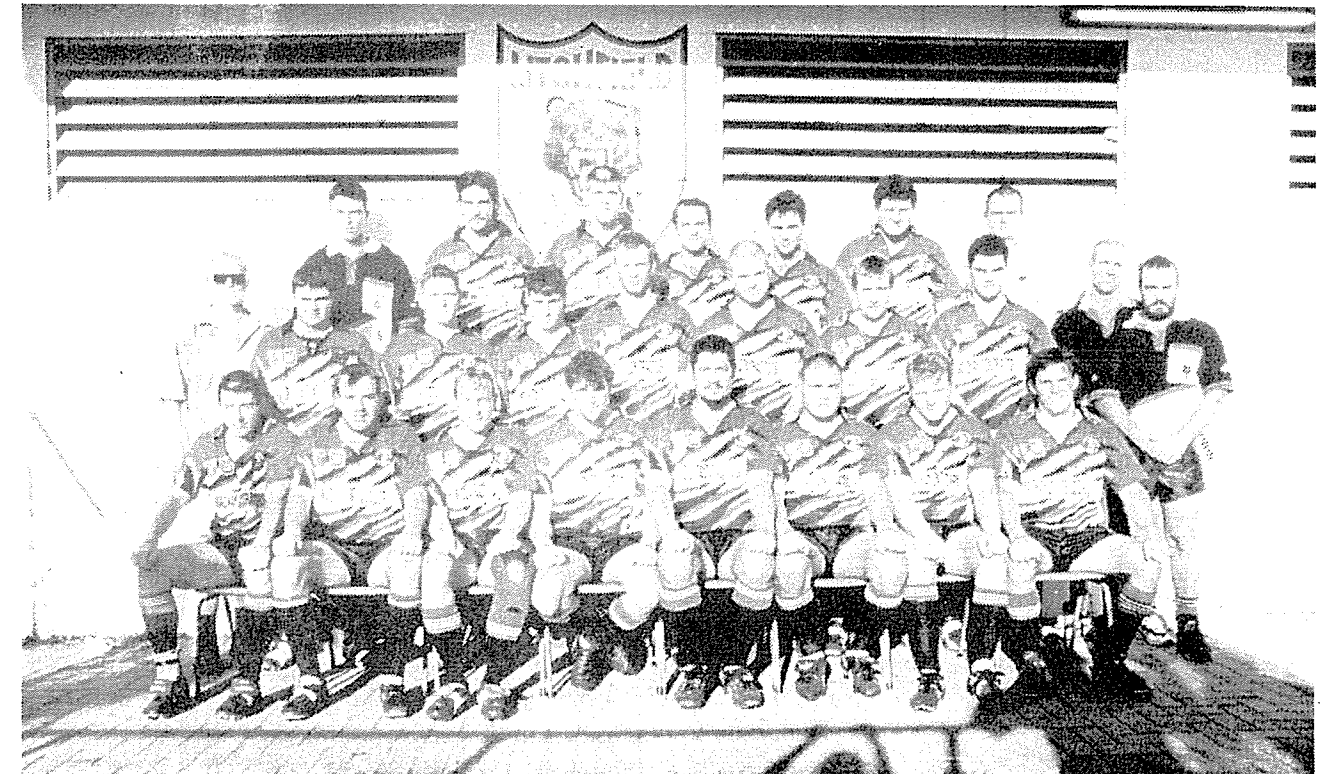


U 16 Premiership Team



U 14 Premiership Team

1999



A Grade



U 15 Premiership Team



**DRL Awards for the season:** Brett Flaherty Reserve Grade Most Points  
 Brett Flaherty Reserve Grade Best and Fairest  
 DRL Club Champions

**1994**

**Senior Players who represented either Darwin or the Northern Territory:** there were no rep matches this season

**LITCHFIELD RUGBY LEAGUE CLUB AWARDS FOR 1999**

**CLUB PLAYER OF THE YEAR: Nick Buckman**

	<b>A GRADE</b>	<b>RESERVE GRADE</b>
<b>Coach:</b>	<b>Dean Noble</b>	<b>Brad "Marbles" Bates</b>
Best & Fairest	Lance Bradley	Joel Tomes
Best Forward	Tim Pearce	Matt Marik
Best Back	Peri Morunga	Nick Buckman
Best Defender	Tim Pearce	Brent Jensen

**JENSEN MEDAL (Most valuable Junior player in 1999):** Dallas Mackay

	<b>UNDER 17's</b>	<b>UNDER 15's</b>	<b>UNDER 13's</b>
<b>Coach:</b>	<b>John Lawton</b>	<b>Paul Rubie</b>	<b>John Bell</b>
Best & Fairest	Luke Andrioff	Liam Manning	David Meyering
Best Forward	Daniel Radovic	John Fenwick	Nathan Tomes
Best Back	Liam McEnerney	Dallas Mackay	Leonard McKinnon
Best Defender	Douglas Allom	Liam Manning	Aaron Barnes
Most Improved	Shawn Wigg	David McClelland	Matthew Mattiazzo
	<b>UNDER 12's</b>	<b>UNDER 11's</b>	<b>UNDER 10's RED TEAM</b>
<b>Coach:</b>	<b>Darren Ryan</b>	<b>Stephen Ralph</b>	<b>Pat Brown</b>
Best & Fairest	Anil Shearsby	Kyle McGinn	Jake Barnes
Most Consistent	Robert Marshall	Michael Walter	Jordan Brown
Most Improved	Kelly Barker	Dan Keogh	Christopher Shepley
	<b>UNDER 10's BLACK TEAM</b>	<b>UNDER 9's RED TEAM</b>	<b>UNDER 9's BLACK TEAM</b>
<b>Coach:</b>	<b>Rod Parker</b>	<b>Bob Brady</b>	<b>Rod Connelly</b>
Best & Fairest	Braedon Talbot	Michael Elphick	Peter Hassall
Most Consistent	Luke Mahood	Phillip Fortiades	Brodie Dowling
Most Improved	Jason Tomes	Geoffery English	Tom Blundell
	<b>UNDER 8's RED TEAM</b>	<b>UNDER 8's BLACK TEAM</b>	
<b>Coach:</b>	<b>Steve Beckett</b>	<b>Jeff Rees</b>	
Best & Fairest	James Beckett	Dylan King	
Most Consistent	Gavin Brown	Reece Coleman	
Most Improved	Andrew Owen	Christian Kennedy	
	<b>UNDER 7's</b>	<b>UNDER 7's</b>	<b>UNDER 6's</b>
<b>Coach:</b>	<b>Dave Bulte &amp; John Samson</b>	<b>Mark Blundel</b>	<b>Dave Bulte</b>
Best & Fairest	Travis Costa	Callum Wilson	Michael Rees
Most Consistent	Aaron Craufurd	Sam Foster	Corbin Maran
Most Improved	Riley Brown	Ricky Mahan	Matthew Gracie

**SEASON OVERVIEW (DRL SEASON No 45)**

At the AGM, towards the end of 1993, Lyle Mackay was elected the new President of the club along with the following committee: Dave Sanders (secretary), Jan Sanders (treasurer), Neville Hayne (vp), John Ascoli, George Edwards, Ben Bradley, Paula Bradley, Brendan Manning, Peter Youens & Peter Maley.

Dean Noble was approached, and accepted the position of A Grade coach for the coming season, after Ian Howcroft had completed his contract and returned to West Australia. Lindsay Leysley was appointed as Reserve Grade coach. The club only lost a few players in the off season and picked up quality players in Mike Hebden, Shane Day, Brian Stimson, Charlie Rawiri and Toby Hawea. The surprise pick up was Mark House, a very talented goal kicker from Nightcliff. These players, plus our continuing players ensured that we had a strong squad to begin with but it was now a matter of whether new coach Dean Noble and his assistant coach Anthony "Rusty" Matua (both of whom had never coached before) could weld the team together.

The preseason was filled with mixed fortunes for the Bears as we won 3 and lost 2 of the minor round matches to narrowly miss out on a place in the final. The Reserve Grade went one better by getting into the preseason Gatley Shield final only to be defeated by Nightcliff 34 - 6.

When the season proper started Deano was given a real baptism of fire with his first premiership match at our home ground at Freds Pass against Brothers. This is a match which most will want to forget as we were thrashed 48 - 4. We would not take anyone lightly after this and the Club bounced back to go through the rest of the minor rounds undefeated. Brothers still proved a thorn in our side however and held us to a 6 all draw in the latter part of the season. Litchfield were easily minor premiers in front of Nightcliff and Brothers. In fact Litchfield and Nightcliff were to finish the minor rounds locked in first and second position in both A and Reserve grades.

Both clubs met in their respective 2<sup>nd</sup> semi finals with Nightcliff pulling off a huge upset and winning in both grades and advancing to the grand finals. The Bears had to do it the hard way but both the A and Reserve grade made it through after wins against University 16 - 8 in Reserve Grade, and 25 - 10 against Brothers in A Grade. While we had high hopes in both grades, the Reserve Grade was to disappoint by losing to Nightcliff 24 - 4 however the A grade made it all worthwhile with a magnificent 16 - 14 win over Nightcliff. Dean Noble scored the winning try in the dying stages to seal the win after a very hard fought game.

The Under 17's also won their premiership defeating Brothers 21 - 4 in the Grand Final.

Season statistics (A Grade premiership matches only)

LITCHFIELD verses	Minor round	SCORE Litch - Opposition	Minor round	SCORE Litch - Opposition	Minor round	SCORE Litch - Opposition
Brothers	1	4 - 48	6	22 - 4	11	6 - 6
University	2	50 - 8	7	36 - 10	12	82 - 8
Nightcliff	3	22 - 10	8	31 - 28	13	26 - 18
South Darwin	4	28 - 6	9	54 - 18	14	150 - 0
Top End Raiders	5	38 - 4	10	62 - 16	15	36 - 10

Litchfield finished the minor rounds as minor premiers. Nightcliff defeated Litchfield 34 - 14 in the 2<sup>nd</sup> semi final. Litchfield defeated Brothers 25 - 10 in the Preliminary Final. Litchfield defeated Nightcliff 16 - 14 in the Grand Final.

**DRL Awards for the season:** Mark House A Grade Golden Boot  
 Mark House A Grade Most Points  
 John Alder A Grade Best and Fairest  
 DRL Club Champions

**Senior Players who represented either Darwin or the Northern Territory:** John Alder, Brad Rogers, Mike Hebden, Mark House & Dean Noble

"Sometimes it is more important to discover what one cannot do, than what one can do." Lin Yutang

	<b>A GRADE</b>	<b>RESERVE GRADE</b>
<b>Coach:</b>	Dean Noble	Lindsay Leysley
Best & Fairest	Talite Liavaa	Charlie Rawiri
Best Forward	John Alder	Charlie Rawiri
Best Back	Mark House	Mike Cunnington
Best Defender	Mike Hebden	Glenn Yetman

**JENSEN MEDAL** (Most valuable Junior player in 1994): Rhys Bradley

	<b>UNDER 17's</b>	<b>UNDER 15's</b>	<b>UNDER 13's</b>
<b>Coach:</b>	Mick Pearson	Paul Albion	Wayne Brennan
Best & Fairest	Rhys Bradley	Ben Clarke	Matthew Burke
Best Forward	Simon Thompson	Jamie Creagh	Tekeppa Russell
Best Back	Geoff Timms	Justin Clayton	Ben Sullivan
Best Defender	Lee Peters	Shawn O'Brien	Matthew Burke & Luke Flemming
Most Improved	Trevor Sabieralski	Clint DosSantos	Brett Smith

	<b>UNDER 12's</b>	<b>UNDER 11's</b>	<b>UNDER 10's</b>
<b>Coach:</b>	Bruce Thatcher	Bob Cahill	John Bell
Best & Fairest	Lyle Mackay	Callum Page	Dallas Mackay
Most Improved	Ashley Rossiter	Shannon Cahill	Robert Allom
Most Improved	Douglas Allom	Ben McCasker	Jarad Brennan

	<b>UNDER 9's</b>	<b>UNDER 8's RED TEAM</b>	<b>UNDER 8's WHITE TEAM</b>
<b>Coach:</b>	Peter Meyering	Steve Smith	Steve Smith
Best & Fairest	Ashley Smith	Matthew Roe	Martin Corrie
Most Improved	Jarred Sack	Edward Rhodes	Stuart Kemp
Most Improved	Shawn Casey	Matthew Weir	Aaron Barnes

**UNDER 7's  
RED & BLACK TEAMS**

<b>Coach:</b>	Mal Tomes & Steve Ralph
Best & Fairest	Trevor Oliver
Most Improved	Dylan Reed
Most Improved	Bryce Finck

**SEASON OVERVIEW (DRL SEASON No 50)**

After winning a record five consecutive premierships in the A Grade, a large number of players either retired or left. Paul Rubie & Toby Hawea retired, Mark House moved interstate, Mike Mendoza started work on a fishing boat and wasn't available until late in the season and long term assistant A Grade coach Lindsay Leysley accepted the A Grade coaching position with University. Phil Matua also transferred to University. Rhys Bradley moved to Katherine and had difficulty attending matches. Joe Carbone also retired for this season due to work commitments. Dean Noble was once again reappointed A Grade coach along with Brad Bates, the Reserve Grade coach. A rebuilding was soon under way and fortunately we gained a considerable number of new players. Unfortunately, many of the new players were servicemen from the army and their availability was sporadic. As such it was difficult to maintain a settled combination. Some of the new players included Peter Clark, George Carmont, Tim Pearce, Jason Iwikau, Darryl Fullbrook, Jeff Frazer, Aaron Caldwell, Scott Krum and Andrew Quan. A number of Reserve Graders were promoted this season and the remainder of the squad mostly included: Dean Noble, Lance Bradley, Lloyd Pierce, Mark Buckley, Andrew Doyle, Brett Flaherty, Peri Morunga, Richard Troutman, Ben Clarke, Tekeppa Russell, John Alder, Paul Carbone, Jackson Fearon, Matt Brady, Luke Marshall, Paul Hassall, Matt Marik, Peter Bamber & Bradley Hunt.

The beginning of the season proved to be somewhat of a disaster for the DRL, with Richardson Park becoming badly damaged after the National Beach Volleyball Championships were held there. A massive amount of sand was placed over plastic sheeting on the oval to cater for this competition, however it came unstuck when it started raining and the sand could not be removed for a number of weeks. The surface had to be re-grassed and it wasn't until the latter part of the season before league matches could be played here again. As such the DRL had to outpost all matches to other ovals.

Meanwhile, the DRL dispensed with the normal preseason competition and went straight into the premiership proper after the usual warm up social competitions. Nightcliff and Brothers had shown some glimpses of promise in these competitions. We lost first up to Brothers at Freds Pass 34 - 12 then an 18 all draw against NTIS before proceeded to win our next five games to put us up at the top end of the ladder behind Brothers. Newcomers, Tim Pearce and George Carmont along with Deano, Tekeppa Russell, Lloyd Pierce, Lance Bradley, Mark Buckley and Peter Clark were all in great form at this stage. Unfortunately, George Carmont returned to New Zealand and a bad run of injuries saw us collapse in the mid season but we did bounce back towards the end when Todd Harley and Kevin Quinlan transferred to the club after Palmerston pulled out of the competition. Also Jeff Frazer, Peri Morunga and Darryl Fullbrook started to become a deadly combination in the backs. Unfortunately Fullbrook left town just before the finals.

Brothers had also relaxed towards the end of the season and were overtaken by Nightcliff and Katherine to finish third on the ladder with Litchfield in fourth place. In the 1<sup>st</sup> semi final we suffered a disappointing loss to Brothers 28 - 16 in a game which we believed we could win, especially after we had disposed of Brothers 38 - 10 in our previous minor round encounter. Brothers went on to be defeated by Nightcliff 24 - 10 in the Grand Final. The Reserve Grade won their 1<sup>st</sup> semi against Nightcliff 42 - 10 and then went on to defeat Brothers 12 - 6 in the Preliminary Final to book a place in the Grand Final against University. The Bears went down courageously 10 - 6 in one of the closest reserve grade grand finals for many years.

The Under 15's, under coach Paul Rubie, kept the club on track with a premiership after defeating University 28 - 22 in their grand final.

Season statistics (A Grade premiership matches only)

LITCHFIELD	Minor round	SCORE	Minor round	SCORE	Minor round	SCORE
verses		Litch - Opposition		Litch - Opposition		Litch - Opposition
Brothers	1	12 - 34	8	20 - 32	15	38 - 10
NTIS	2	18 - 18	9	18 - 20	16	22 - 28
South Darwin	3	26 - 24	10	24 - 20	17	32 - 18
University	4	14 - 12	14	0 - 36	18	32 - 22
Nightcliff	5	26 - 14	13	14 - 30	19	24 - 10
Katherine	6	36 - 24	12	10 - 24	20	12 - 24
* Palmerston	7	80 - 2	11	*	21	*

NB. The DRL changed the order in which the matches were played for the second round. The minor round numbering indicates the actual order in which the matches were held.

- Palmerston withdrew from the competition after the first full round of matches.

Litchfield finished the minor rounds in 4<sup>th</sup> position.  
Brothers defeated Litchfield 28 - 16 in the 1<sup>st</sup> semi final.  
Nightcliff defeated Brothers 24 - 10 in the Grand Final.

**Humpty Doo Seafoods**  
Ken McGrigor Retail Supplies

\* Mud Crab \* Barramundi \* Fish + Chips

Humpty Doo Shopping Plaza Phone  
P.O. Box 115 **8988 1481**  
Howard Springs NT 0835

**Humpty Doo Diesel Service**  
Ralph & Natalie Kuhlwind

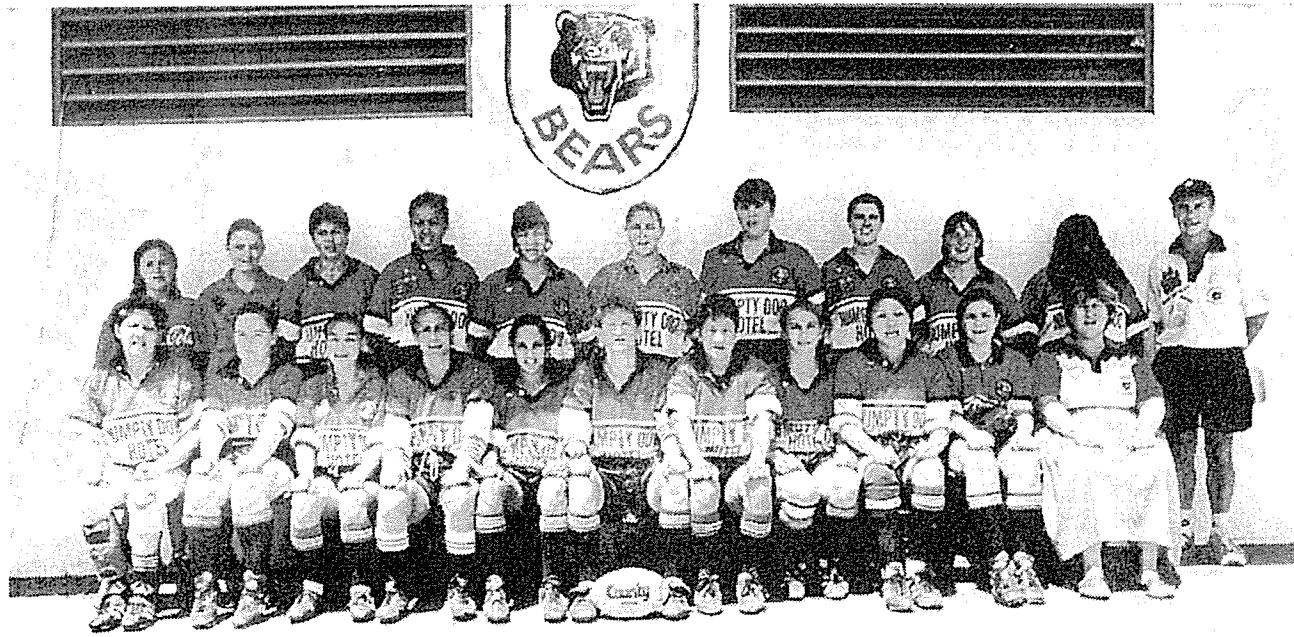
Workshop or Field Service  
Parts, Engines and Equipment  
Rego Check

**Phone: (08) 8988 4961**  
Fax (08) 8988 4962  
32 Vereker St Humpty Doo  
P.O. Box 926 Humpty Doo N.T. 0836  
Email: HumptyDooDiesel@bigpond.com.au



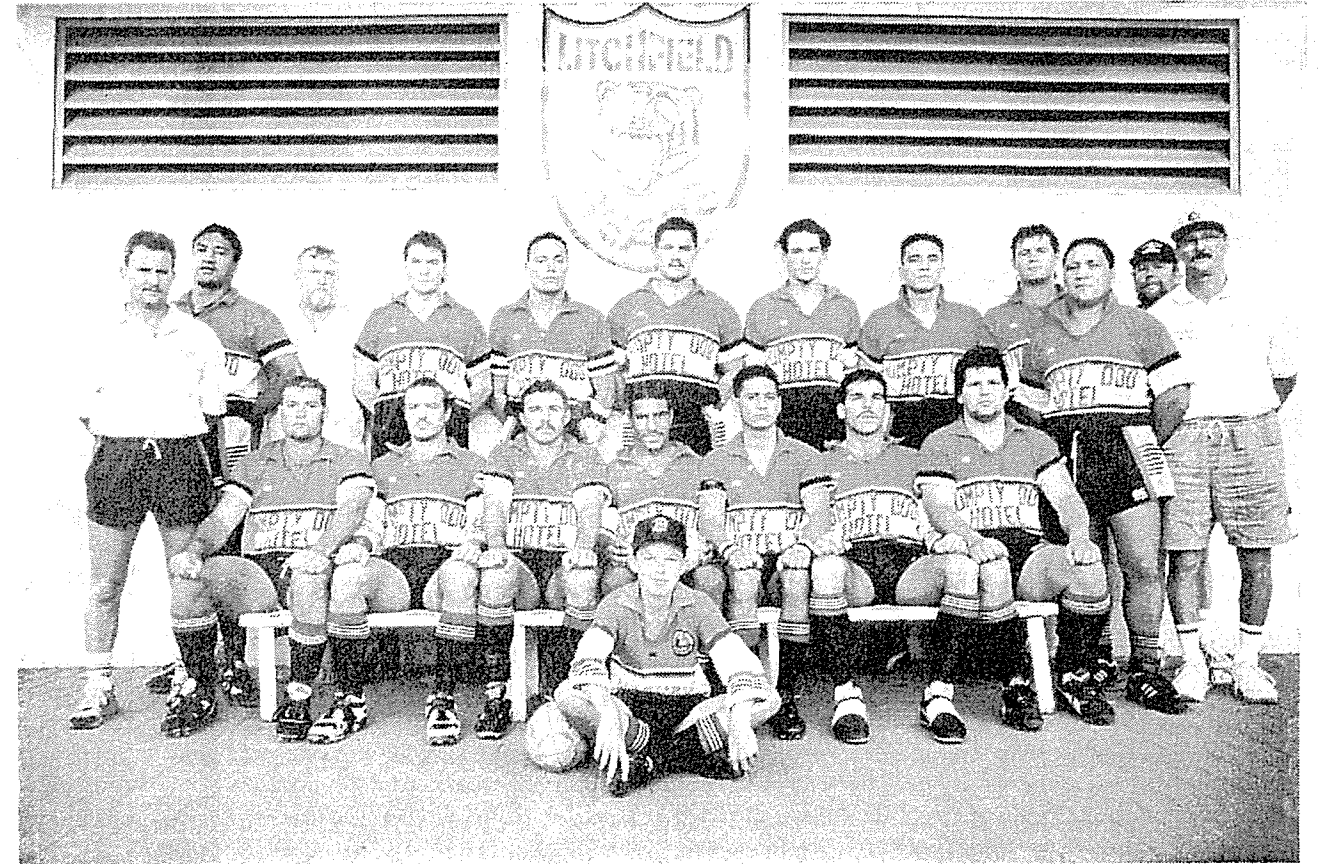


1998

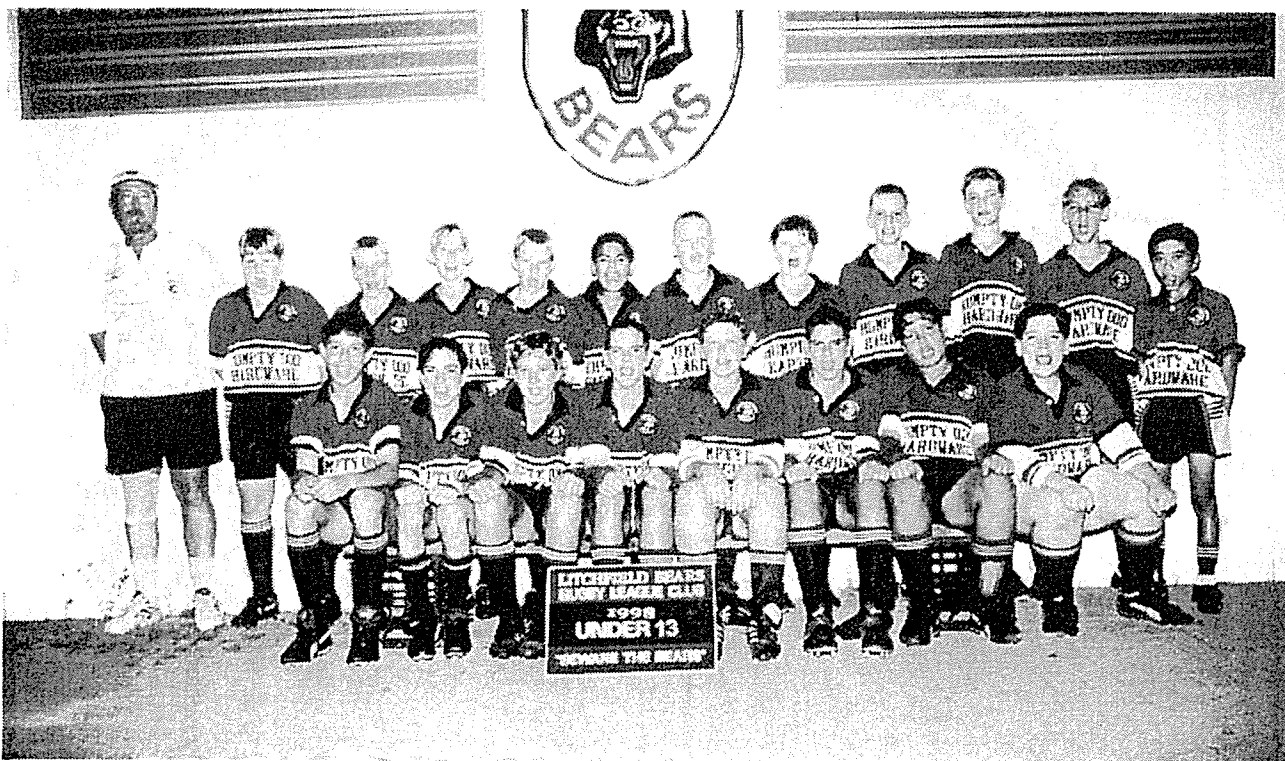


Womens Team

1994



A Grade



U 13 Premiership Team



U 17 Premiership Team

1995

SEASON OVERVIEW (DRL SEASON No 46)

"It is not the employer who pays wages - he only handles the money. It is the product that pays wages." Henry Ford

After our hard earned premiership win of the 1994 season, the club was still on a high as it approached 1995. The club was enjoying a new standard in excellence both on and off the field. Our AGM at the end of 1994, held at Lakeview Hall, was only attended by a small group which resulted in a small committee (the smallest that the club had experienced since it became Litchfield). Dave & Jan Sanders retired from the committee after many years of faithful service as did John Lawton (for the first time) after a virtual lifetime of committee work. The incoming committee included only eight members as follows: Lyle Mackay (president), Paul Albion (secretary), Sue Meyering (treasurer), George Edwards, Neville Hayne (vp), Peter (Squeak) Youens, Brendan Manning (juniors coordinator) and Peter Meyering. Small though it was, there was plenty of enthusiasm and everyone pulled their weight and no business was neglected. Dean Noble was re-appointed A Grade coach and as the season approached it became evident that we would be very strong on the field as we only lost a couple of players from the previous year (Rusty Matua and Mike Hebden returned to NZ and Shane Day returned to Sydney)

We also picked up some extremely talented players in Simon Moyle from local club University, Willie Pickering, Justin Baker & Craig Cochrane from Queensland and Andre Mertens from West Australia. All of which forced their way into an already formidable A Grade team.

We started the season by winning the social South Darwin 10-a-side competition but never really got going in the 7-a-side comp which followed. We proved too strong in the DRL preseason competition winning our two minor round matches and then defeating Nightcliff 36 - 30 in a hard fought preseason final in which the Bears played for most of the game with only 12 players after Dean Noble was sent off before half time. The good work did not end there and we continued on our winning way into the premiership rounds defeating all comers until we next played Nightcliff in round 5. This time they spoilt our unbeaten run by handing us our only real defeat for the season. Players who were performing well up to this stage of the season included John Alder, Talite Liavaa, Reggie Saylor, Justin Baker, Rod Keelan, Joe Carbone and Brad Rogers.

Not all the battles were being fought on the field however, as a few were also being fought in the board room. We suffered more losses in the board room than we did on the field, but by the end of the season it would be the clubs which would have the final say. Our biggest set back was the decision by the league to close the gates to spectator parking (a decision which was reversed next year). This matter infuriated our committee and supporters and caused our spectator numbers to decrease. Our club was performing at its best on the field, however the decisions behind the scenes robbed us of our spectators who should have been there to witness our finest moments.

Another issue which potentially divided the clubs, spectators and administrators was Super League. The DRL and NTRL at the time, found it extremely difficult to keep up with information on Super League and the ARL's opposition to it. The DRL board at the time found it difficult to get any clear direction and it was too hard to get timely information to the clubs. It proved to be a very emotional issue however, in the end, it boiled down to a clear business decision. The ARL had been sponsoring the NTRL to the tune of about \$120,000 pa and after some negotiations had suggested that it could be increased to \$150,000 pa, however they made it quite clear that there would be no further significant increase in the foreseeable future. Super Leagues final offer was \$250,000 pa plus an equivalent representative program for the seniors as well as access to fully funded national junior super league competitions for U17's and U19's. This offer was accepted although the junior competitions didn't quite eventuate as planned.

Meanwhile, back on the field, a different battle was raging and Litchfield was running away with the premiership. Mark House, Justin Baker, Mike Mendoza, Brad Rogers, Joe Carbone, Simon Moyle, Mark Fitzgerald, Phil Matua and John Alder were all having outstanding seasons. Towards the end of the season we did receive one bit of a scare when South Darwin raced away to a 32 - 20 lead with only 10 minutes till full time in round 13. Litchfield rallied however and denied Souths the win coming back to snatch a thrilling 32 all draw with only seconds remaining. Litchfield of course finished the minor rounds as minor premiers with Nightcliff being the closest of the rest. Talite Liavaa, Toby Hawea, Craig Cochrane, Rod Keelan, Simon Moyle and Willie Pickering were also in top form at the right end of the season and we approached the finals full of confidence. Litchfield cruised through the finals in an awesome display of class and strength defeating Nightcliff first, in the 2nd semi final and then again in the grand final after they had disposed of University in the preliminary final. Dean Noble and Lindsay Leysley proved to be a formidable coaching combination.

Our Reserve Grade and Under 19's also made it into the final series however were eliminated in the semis. Our Juniors had a magnificent year with the club taking out 5 of the 6 junior division competitions. The club was premiers in A Grade, U17, U15 and competition winners in U12, U11 & U10's. With such depth it is no wonder that we also won the club championship for 1995. This will no doubt be one of Litchfield's greatest seasons as to win 6 out of a possible 9 divisions is the stuff that only dreams are made of.

1998



A Grade



Reserve Grade Premiership Team



Senior Players who represented either Darwin or the Northern Territory: Joe Carbone, Brett Flaherty, Mark House, Phil Matua, Peri Morunga, Paul Rubie, Mark Buckley & Toby Hawea,

**LITCHFIELD RUGBY LEAGUE CLUB AWARDS FOR 1998**

**CLUB PLAYER OF THE YEAR: Paul Rubie**

	A GRADE	RESERVE GRADE	WOMENS TEAM
<b>Coach:</b>	Dean Noble	Brad "Marbles" Bates	Loyla Leysley & Paul Albion
Best & Fairest	Peri Morunga	Glenn Yetman	Rebecca Pearce
Best Forward	Lance Bradley	Nathan Ahern	Rebecca Pearce
Best Back	Mark Buckley	Mark Fitzgerald	Peggy Cooper
Best Defender	Peri Morunga	Glenn Yetman	Gail Barlow

**JENSEN MEDAL** (Most valuable Junior player in 1998): Lyle Mackay

	UNDER 17's	UNDER 15's	UNDER 13's
<b>Coach:</b>	Wayne Brennan	Bob Cahill	Glen Fenwick
Best & Fairest	Tekeppa Russell	Liam McEnerney	Lachlan Costa
Best Forward	Mark Williams	Matthew Henderson	Shawn Casey
Best Back	Aaron Brennan	Liam Manning	Bruce Manski
Best Defender	Jackson Crews	John Fenwick	Nathan Gribben
Most Improved	Mark Williams	Nathan Graham	Blake Williams

	UNDER 12's	UNDER 11's	UNDER 10's POLARS
<b>Coach:</b>	Brenton Marschke	A W	Brendan Fleetwood
Best & Fairest	Aaron Barnes	Anil Shearsby	Thomas Rees
Most Consistent	Jack Quinn	Robert Marshall	Max Hancock
Most Improved	Ben Moffatt	Martyn White	Luke Chick

	UNDER 10's GRIZZLEYS	UNDER 9's RED TEAM	UNDER 9's BLACK TEAM
<b>Coach:</b>	Paul Rubie	Darren Ryan	Rod Parker
Best & Fairest	Dan Keogh & Kai Argent	Jake Barnes	Zakary Brown
Most Consistent	Beau Kennedy	Michael Treloar	Jason Tomes
Most Improved	Daniel Kosta	James Henderson	Kael Brady

	UNDER 8's RED TEAM	UNDER 8's BLACK TEAM
<b>Coach:</b>	Bob Brady	Rod Connelly
Best & Fairest	Michael Elphick	Douglas Atkins
Most Consistent	Callum Brady	Anthony Erhart
Most Improved	Brett Duturbure	Torn Blundell

	UNDER 7's	UNDER 6's
<b>Coach:</b>	Jeff Rees	Dave Bulte
Best & Fairest	Shawn Sampson	Mitchell Blundell
Most Consistent	Gavin Brown	Riley Brown
Most Improved	Dylan King	Jarrold Biax

Super League/ARL negotiations heated up at the end of the season and the DRL & NTRL finally decided to go with Super League. Meanwhile there were a number of casualties along the way. Barry Bamford resigned as chairman of the DRL in August'95 and Arthur Boland became the temporary chairman until he also resigned in September'95. John Lawton then became the temporary chairman and remained in the position until the AGM when Lyle Mackay was elected DRL chairman under a new board structure. A couple of weeks later at the NTRL AGM, Mick Martin stood down as chairman of the NTRL in controversial circumstances and Warren Donald was elected as the new NTRL chairman.

Season statistics (A Grade premierships matches only)

LITCHFIELD verses	Minor round	SCORE Litch - Opposition	Minor round	SCORE Litch - Opposition	Minor round	SCORE Litch - Opposition
University	1	32 - 18	6	28 - 12	11	38 - 6
South Darwin	2	50 - 30	7	28 - 16	12	32 - 32
Brothers	3	30 - 12	8	58 - 22	13	72 - 0
Palmerston	4	38 - 10	9	64 - 18	14	62 - 0
Nightcliff	5	16 - 28	10	26 - 18	15	54 - 4

Litchfield finished the minor rounds as minor premiers. Litchfield defeated Nightcliff 48 - 8 in the 2<sup>nd</sup> semi final. Litchfield defeated Nightcliff 23 - 6 in the Grand Final.

**DRL Awards for the season:** John Loveday Reserve Grade Most Tries  
Mark House A Grade Most Tries  
Mark House A Grade Golden Boot  
Mark House A Grade Most Points  
Combined Tries Award  
DRL Club Champions

Senior Players who represented either Darwin or the Northern Territory: Mark House, Talite Liavaa, Brenton Marschke, Phil Matua, Dean Noble, Simon Moyle, Mike Mendoza & Justin Baker



## N.T. Spring Works

Spring Manufacturers

# 8984 4217

Fax 8947 1399

*New Springs*

*U Bolts, Bushes,*

*Shock Absorbers,*

*Small Springs*

*Trailer Springs and Parts*

*Slasher Blades,*

*Reconditioned Exchange Springs,*

*Springs made to order*

**For fast reliable service on all vehicles**

**Guaranteed Quality Work Truck and 4WD Specialists**

**Still at 1888 Pruen Road Berrimah**

**Behind Shell Truck City**

*Established 24 years*

LITCHFIELD RUGBY LEAGUE CLUB AWARDS FOR 1995

CLUB PERSON OF THE YEAR: Brenton Marschke

	A GRADE	RESERVE GRADE	UNDER 19's
<b>Coach:</b>	Dean Noble	Brian Stimson	Brenton Marschke
Best & Fairest	John Alder	John Loveday	Clint McAuliffe
Best Forward	Joe Carbone	Darren Spurgeon	Tony Doyle
Best Back	Brad Rogers	Mark Buckley	Brad Feeney
Best Defender	Simon Moyle & Craig Cochrane	Brad Richardson	Craig Albion

**JENSEN MEDAL** (Most valuable Junior player in 1995): Craig Albion

	UNDER 17's	UNDER 15's	UNDER 13's
<b>Coach:</b>	Mal Tomes	Paul Albion	Bruce Thatcher
Best & Fairest	Sion Leysley	Joe Rotumah	Cassidy Hodgson-Taylor
Best Forward	Craig Albion	Sam Turnbull	Cassidy Hodgson-Taylor
Best Back	Philip Siedler	Shawn O'Brien	Douglas Allom
Best Defender	Simon Thompson	Luke Flemming	Douglas Allom
Most Improved	Leigh Harwood	Daniel Spring	David Gates

	UNDER 12's	UNDER 11's	UNDER 10's
<b>Coach:</b>	Bob Cahill	Wayne Brennan	Steve Smith
Best & Fairest	Shannon Cahill	John Fenwick	Robert Sheridan
Most Improved	Liam McEnerney	Alistair Carmichael	Nathan Flemming
Most Improved	Jai Shearsby	Jim Williams	Jarred Sack

	UNDER 9's RED TEAM	UNDER 9's WHITE TEAM	UNDER 8's
<b>Coach:</b>	Peter Meyering	Selwyn Paraha	Mark McCasker
Best & Fairest	Matthew Mattiazzo	Martin Corrie	Bryce Finck
Most Improved	Heath Tiffen	Nathan Tomes	Reg Rose
Most Improved	Stuart Kemp	Ryan Abbott	

	UNDER 7's RED TEAM	UNDER 7's WHITE TEAM	UNDER 6's
<b>Coach:</b>	Steve Ralph	Pat Brown	Steve Ralph & Pat Brown
Best & Fairest	Adam Cherry	Thomas Rees	Jake Marshall
Most Improved	Massey Taylor	Dan Keogh	Jake Barnes
Most Improved	Tom Hartell	Jason Tomes	Morgan Shannon

1998

"We all like to think we're unique until someone tells us we're different." P.K. Shaw

**SEASON OVERVIEW** (DRL SEASON No 49)

1998 started with a new team in the DRL competition. The NT Institute of Sport (NTIS) team was established to provide a development stage for young players under the guidance of a professional coach. The concept was to provide a stepping stone for young players as they developed into senior players. Our club has been a major source of players for this team and our club has taken a keen interest in its progress, as hopefully, this association will not only benefit the players but the mother club as well. The DRL also introduced a women's competition this season.

Dean Noble was once again appointed A Grade coach and newcomer, Brad Bates was appointed Reserve Grade coach. Some new players including Peri Morunga, Nick Buckman, Brett Flaherty, Rod Partridge, Simon Cronin, Ben Mena, Kelly McGill & Eden Zerbst joined an already impressive squad including Phil Matua, John Alder, Richard Troutman, Mark House, Rhys Bradley, Lance Bradley, Lloyd Pierce, Mark Buckley, Paul and Joe Carbone, Paul Rubie, Jamie Ryan, Reece Page, Andrew Doyle, Charlie Dickman, Karl Sohl, Geoff Timms, Paul Hassall, Glenn Yetman, Ben Clarke and Dean Noble to name a few. Both the A and Reserve Grade floundered in the preseason however it was back to business when the season proper got under way.

The club was entering uncharted waters at this stage as no DRL club had ever won more than four consecutive premierships and we were determined to be the first. The A Grade won their first five premiership matches to be the competition front runners, however we faltered against Brothers when we were narrowly defeated 16 - 12. The Bears faltered again against Brothers 28 - 22 later in the season. Other than Brothers, University was the only other club to take a match off Litchfield in the minor rounds. As such we finished as minor premiers with Brothers second.

The second semi final against Brothers produced one of the most remarkable matches ever held at Richardson Park (now Harvey Norman Park). The game was a sea saw affair with the score changing hands a number of times as neither side could establish a winning break. Referee Kelly sent Paul Rubie off just before half time which left us with only 12 men. We went into the break down 10 - 8. With ten minutes to go brothers were leading 16 - 12 when Matua scored a try to make it 16 all. About two minutes later House kicked a field goal to edge Litchfield in front 17 - 16. Then with only a couple of minutes remaining Kelly awarded a penalty to Brothers right in front which gave them an 18 - 17 lead. With only seconds remaining Litchfield received a penalty just inside their own half. The Bears kicked for touch as the siren sounded and only the tap restart remained before the close of play. The tap was taken and the ball moved across field to Mark House who calmly attempted a field goal from about 40 meters out. The ball sailed over the black dot to lock the scores at 18 all, and force the match into extra time. Brothers (who had already started celebrating) were devastated and couldn't hold on as we scored in extra time to seal the game 22 - 18. It was a double blow for Brothers as we also defeated them in Reserve Grade 40 - 0 to progress to the grand finals in both grades. Brothers didn't survive the preliminary finals and we ended up defeating University 20 - 10 in the Reserve Grade and Nightcliff 24 - 18 in the A Grade grand finals.

The women's team were runners up in their grand final as were the Under 17's, however the Under 13 brought home the bacon once again defeating Palmerston 22 - 10 in their grand final.

Season statistics (A Grade premiership matches only)

LITCHFIELD verses	Minor round	SCORE Litch - Opposition	Minor round	SCORE Litch - Opposition	Minor round	SCORE Litch - Opposition
University	1	28 - 24	8	28 - 20	19	22 - 26
Palmerston	2	22 - 16	10	66 - 8	16	62 - 8
Nightcliff	3	32 - 4	11	44 - 0	15	26 - 16
Katherine	4	64 - 8	14	26 - 10	17	66 - 10
South Darwin	5	30 - 10	13	42 - 0	18	20 - 0
Brothers	6	12 - 16	12	32 - 14	20	22 - 28
NTIS	7	28 - 8	9	52 - 12	21	46 - 12

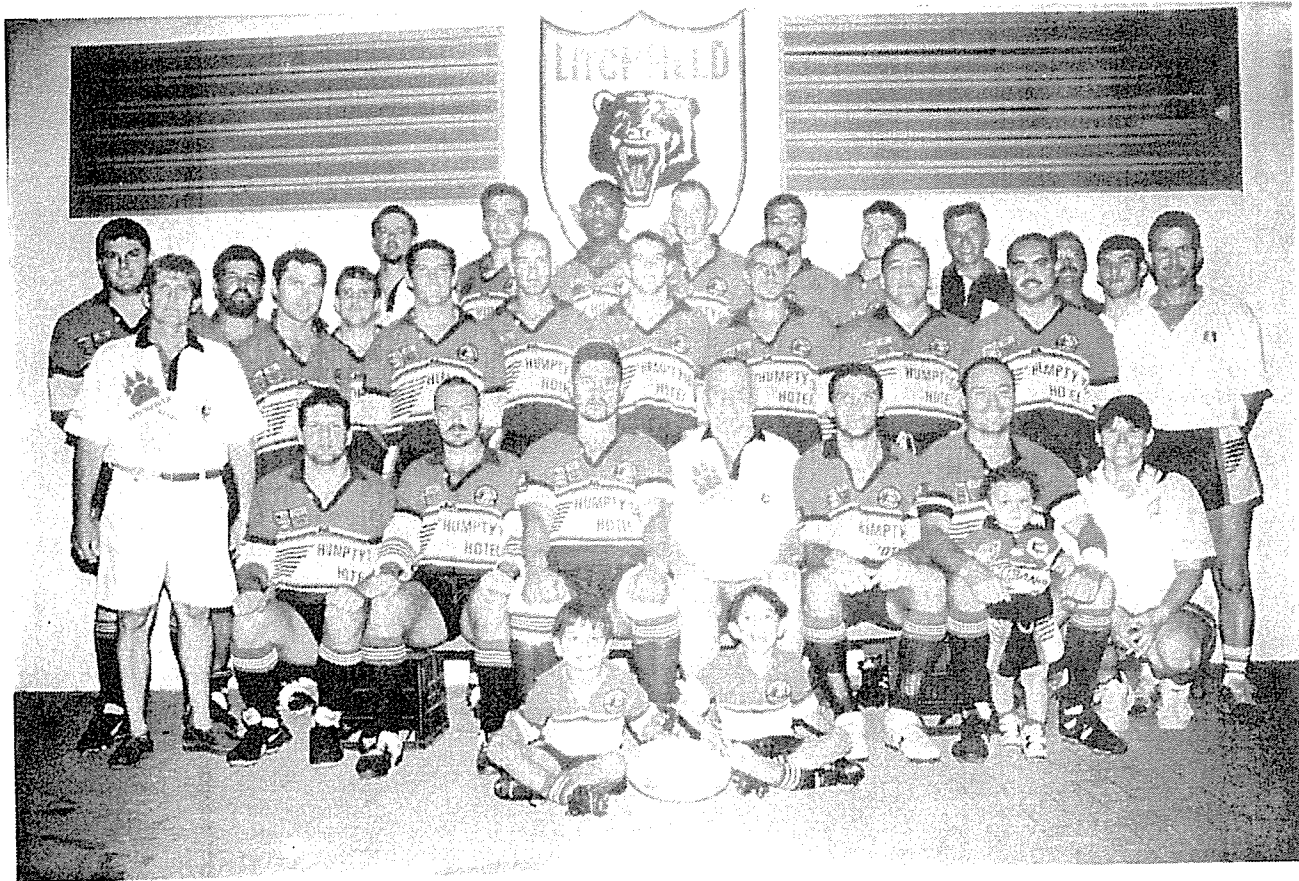
**NB.** The DRL changed the order in which the matches were played for the second and third rounds. The minor round numbering indicates the actual order in which the matches were held.

Litchfield finished the minor rounds as minor premiers. Litchfield defeated Brothers 22 - 18 in the 2<sup>nd</sup> semi final after extra time (scores were locked at 18 all at full time). Litchfield defeated Nightcliff 24 - 18 in the Grand Final.

**DRL Awards for the season:**  
 Mark Fitzgerald & Glenn Yetman Reserve Grade Most Tries  
 Mark Fitzgerald Reserve Grade Most Points  
 Glenn Yetman Reserve Grade Best and Fairest  
 Mark House A Grade Golden Boot  
 Mark House A Grade Most Points  
 Lance Bradley Frank Johnson Medal  
 DRL Club Champions



1997

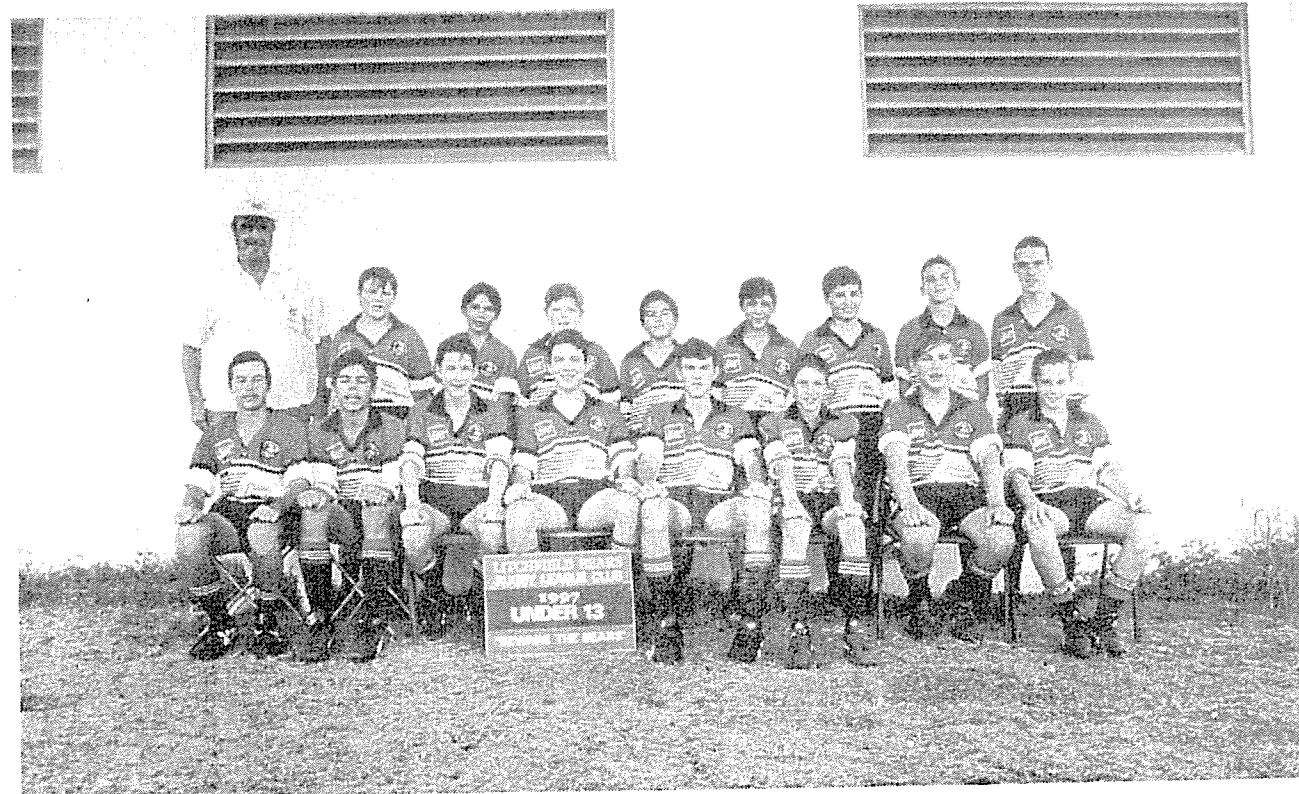


A Grade

1995



A Grade



U 13 Premiershhip Team



U 17 Premiershhip Team



U 15 Premiership Team

DRL Awards for the season: DRL Club Champions

Senior Players who represented either Darwin or the Northern Territory: Rhys Bradley, Joe Carbone, Paul Rubie, Brad Shannon, Lloyd Pierce, Mike Mendoza & Dean Noble.

LITCHFIELD RUGBY LEAGUE CLUB AWARDS FOR 1997

CLUB PLAYER OF THE YEAR: Phil Matua  
 CLUB PERSON OF THE YEAR: Sue Tomes

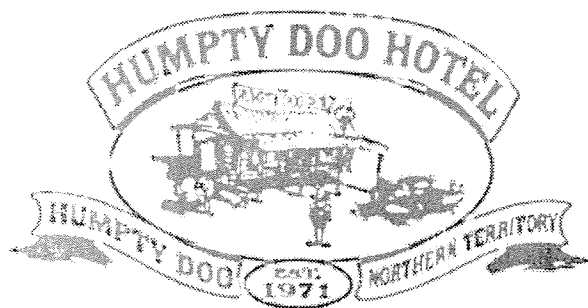
	A GRADE	RESERVE GRADE
<b>Coach:</b>	Dean Noble	Wayne "Greencan" Greenhalgh
Best & Fairest	Richard Troutman	Ben Clarke
Best Forward	John Alder	Joel Tomes
Best Back	Brad Shannon	Grant Sanders
Best Defender	Lloyd Pierce	Matthew Brady
Most Hit Ups	Joe Carbone	

JENSEN MEDAL (Most valuable Junior player in 1997): Brett Smith

	UNDER 17's	UNDER 15's	UNDER 13's
<b>Coach:</b>	Wayne Brennan	Bob Cahill	Glen Fenwick
Best & Fairest	Jackson Crews	Luke Trahair	John Fenwick
Best Forward	Brett Smith	Dominic Bredhauer	Sean Bendtsen
Best Back	Daniel Clarke	Travis Cooper	Brian Hardwick
Best Defender	Damien Thompson	Lyle Mackay	Dallas Mackay
Most Improved	Brendan Dennis	David Gates	Nicholas Spring
	UNDER 12's	UNDER 11's	UNDER 10's
<b>Coach:</b>	Steve Smith	Brenton Marschke & Peter Meyering	Shane Cribb & Brendan Fleetwood
Best & Fairest	Steven Lawford	David Humphrey	Bryce Finck
Most Consistent	Nathan Gribben	Aaron Barnes	Robert Marshall
Most Improved	William Hallen	Leonard McKinnon	Nicholas Everard-Shepley
	UNDER 9's	UNDER 8's RED TEAM	UNDER 8's BLACK TEAM
<b>Coach:</b>	Brendan Fleetwood	Darren Ryan	Rod Parker
Best & Fairest	Tyler Fleetwood	Michael Treloar	Jason Tomes
Most Consistent	Adam Foster	Jake Barnes	Zakary Brown
Most Improved	Daniel Rhodes	Jordan Brown	Joshua Parker
	UNDER 7's	UNDER 6's	
<b>Coach:</b>	Pat Brown & Terry Kemp	Pat Brown & Darren Ryan	
Best & Fairest	Brian Watts	Ryan Hynds	
Most Consistent	Daniel Dickinson	Riley Brown	
Most Improved	Simon Treloar	Callum Wilson	

NB. Ilimo Raquisia moved to Darwin during this season from Fiji and instantly won the hearts of all our players and supporters. He was a young man with enormous potential and while he preferred and excelled at rugby union he also made many friends at our club. Tragically, he contracted a rare illness a couple of years later and passed away quite suddenly.

**Cottage  
 accommodation  
 Bars  
 Bistro  
 Bottleshop  
 Keno  
 TAB  
 Pokies  
 EFTPOS**



**Arnhem Highway  
 Humpty Doo  
 Phone (08) 8988 1372  
 Fax (08) 8988 2470**



**SEASON OVERVIEW** (DRL SEASON No 48)

The AGM at the end of 1996 was held at the site of our new clubhouse at Freds Pass. The building had started and the roof was on but very little else. The committee was keen to hold its first meeting in the new clubhouse even though it wasn't finished. A reasonably large number attended the AGM and quite a few changes were made to the make up of the committee. The committee for the 1997 season was elected as follows: Lyle Mackay (president), Kathy Boyd (secretary), Henrietta Watts (treasurer), Paul Albion, Jill Albion, Sue Meyering, Pat Mackay, Sue Tomes, Tracy Marshall, Neville Hayne, Peter Youens, Wayne Greenhalgh, Brendan Manning, Bob Cahill, Kevin Page and George Edwards. Peter Meyering (juniors coordinator) was also seconded to the committee at the next committee meeting.

Lyle Mackay was re-elected president of the DRL and the NTRL at their respective AGM's which were held a couple of weeks later. Kevin Page was elected the Litchfield Director to the DRL Board for 1997. It was very quiet between seasons and the 1997 season started a little earlier than normal which appeared to catch a few of the clubs napping. The South Darwin social 10-a-side competition was down on nominations with our club being the only club to nominate more than one team. The 10-a-side proved to be a welcome return home for Joe Carbone and new recruit Richard Troutman who both figured well in the Bears team. Our Litchfield Bears team cruised through this competition with the only real resistance coming from Nightcliff who we defeated in the final 22 - 10. The DRL "Gray Supermarket" 7-a-side competition was similar with the Litchfield Bears defeating University 20 - 0 in a very one sided final. The "Drink Sense" pre season competition followed, and the Bears continued on their winning way in the early rounds. Then we came to the first representative game of the season with Darwin City playing Darwin Country in a mid week match. Litchfield had about 12 players in the Darwin Country team, which was narrowly defeated by the City team. We received quite a few injuries in this game and when it came to our next game, against Brothers, we were a little weary and lost our first game for the season. The final of the pre season competition was played the next week between Litchfield and Nightcliff. We played hard but Nightcliff were too good on the night and became the early season favourites, although we were not far behind. The Reserve Grade went on to win their preseason final for the "Gatley Shield" against South Darwin 12 - 10. This is only the second time that the club has won the Reserve Grade preseason competition, the first being in 1968.

In the season proper we had a terrible start as we fielded a unregistered player in our first match against Brothers, the scores were locked at 28 all when the game was stopped (due to a power failure). Brothers were subsequently awarded the match 20 - 0. This served as a bit of a wake up call as we then won our next four matches comfortably and lost to South's in our last minor round match of the first round. South's were very strong again this season and became the front runners of the competition with Litchfield in hot pursuit. We cruised through the second round but again stumbled against South's at the end of the second round. Lloyd Pierce, Rhys Bradley, Brad Shannon and newcomer Ilimo Raqisia were in sensational form at this stage. South's on the other hand had only dropped two games up to this point, both against University and continued on their winning way. We lost another match at the hands of Nightcliff, however we finished the remainder of the minor rounds without another loss. We narrowly defeated South's 24 - 22 in our third attempt in the last minor round match of the season. South's had been strong all season, however there were signs that they were fading towards the end and although it had taken us all season to get on top of them we weren't going to let them stop us now. We cruised passed them in the second semi final to book a berth in the grand final. It had been a long season for South's and they didn't want to face up to University in the Preliminary Final, as they were the only other side to get the better of them this season. University struggled to defeat South in the prelim final 20 - 16 which set the stage for a Litchfield v University grand final. This suited us as we had defeated University in all three minor round matches and the grand final proved to be no different as we won 28 - 14. Unfortunately this was one of the rare seasons in which our reserve Grade suffered from lack of numbers and did not make it into the finals. Once again, our juniors kept the flag flying with a premiership in the Under 13 division while the Under 17's and Under 15's were runners up.

Season statistics (A Grade premiership matches only)

LITCHFIELD verses	Minor round	SCORE Litch - Opposition	Minor round	SCORE Litch - Opposition	Minor round	SCORE Litch - Opposition
Brothers	1	* 0 - 20	8	60 - 10	15	28 - 18
Nightcliff	2	30 - 6	9	22 - 16	16	22 - 24
	3	bye	10	bye	17	Bye
Palmerston	4	52 - 10	11	66 - 0	18	62 - 4
Katherine	5	26 - 22	12	58 - 14	19	32 - 22
University	6	32 - 20	13	26 - 24	20	26 - 22
South Darwin	7	6 - 18	14	16 - 31	21	24 - 22

- This match was stopped 14 minutes early due to a power failure, with the scores at 28 all, however it was discovered that the Bears had fielded an unregistered player therefore the match was awarded to Brothers 20 - 0.

Litchfield finished the minor rounds in 2<sup>nd</sup> position.  
Litchfield defeated South Darwin 25 - 10 in the 2<sup>nd</sup> semi final.  
Litchfield defeated University 28 - 14 in the Grand Final.

**SEASON OVERVIEW** (DRL SEASON No 47)

*"A champion team will always beat a team of champions." Old saying*

For the club, the 1996 season virtually began immediately after the 1995 season was completed. Our AGM produced a larger committee than the previous season but all of the executive positions remained the same. The Litchfield committee for the 1996 season was : Lyle Mackay (president), Paul Albion (secretary), Sue Meyering (treasurer), George Edwards, Neville Hayne (vp), Peter (Squeak) Youens, Brendan Manning (juniors coordinator), Peter Meyering, Jill Albion, Sue Tomes, Tony Barker, Kevin Page and Bob Cahill. Dean Noble was once again appointed A Grade Coach. The season began with much DRL business and meetings as the Super League issue was at the forefront of all agendas. The DRL had undergone a restructure at its AGM and Lyle Mackay was elected as President. Each club was required to provide a Director on the Board and Paul Albion became the first Director to represent the Litchfield RLC under this new structure.

Not all of the 'between season' negotiations involved administrators as some clubs were also active in the search for new players. There were many new challenges to be met with quite a few players looking to new horizons. A number of our club players were snapped up by interstate/overseas clubs. Talite Liavaa gained selection in the Tongan World Cup team and travelled to England and remained there for the 1996 season with the Salford RL club. Mark House was contracted to the Western Reds after Steve Rogers had taken a job with them after leaving the DRL.

House'e caused some dramas when he returned to the NT after a falling out with the Reds, however the Western Reds had never applied for a clearance from Litchfield (or the DRL for that matter) until after he had returned to Darwin. The DRL Board had no hesitation in ruling in favour of his return. Promising junior Clint McAulliffe received a scholarship (for want of a better word) with the North Queensland Cowboys and remained in their feeder area of Townsville for the next few years. Another promising junior, Sion Leysley was picked up by "would be" Super League Club the Adelaide Rams, however returned to Darwin early in 1996 when the first court ruling against Super League was handed down. Phil Matua transferred to Townsville and Simon Moyle decided to retire.

Other A Graders to leave and not return this season were Willie Pickering, Justin Baker and Craig Cochraine who all returned to Queensland and Andre Mertens who returned to West Australia. Needless to say, that as we approached the 1996 season we were looking to rebuild our A Grade team. With so many players leaving town we were not overly concerned as we had an outstanding array of local talent within our club to draw on. We were also excited at the prospect of Jock McLeod playing for the Bears in 1996 after he signed during the early preseason social competitions. We weren't concerned, that is, until a number of our most promising local players (Brad Rogers, Joe Carbone, Rodney Keelan & Brad Richardson) decided to transfer to South Darwin. Jock McLeod also moved across to Souths before the premiership matches had started. Needless to say we had our share of dramas early in the season. Souths had not endeared themselves to the other clubs either as they also signed a number of top players from them as well. South Darwin had amassed a formidable amount of talent and were being hailed as the million dollar team, and some believed that they would be unbeatable. The stage for the season had now been set and Souths would always be high on our hit list.

To our benefit both Phil Matua and Mark House returned and Sion Leysley not only returned but brought a number of young players back with him. Stuart Baird, Brad Wallace and Chris Hampton all helped the club to consolidate in the early stages of the season. Stuart, Brad and Chris all returned to Southern climes by mid season after becoming a little homesick, however they did make a worthwhile contribution in the early matches.

In the seven round DRL preseason competition, we lost two matches, one to Nightcliff our closest rival for a number of years and one to the new boys on the block, the Katherine Kowboys. This was the first appearance by a Katherine based team in the DRL competition after an absence of about 12 years and they had started the season on fire, winning their first three preseason matches. They failed to go with it though when the going began to get tougher. The highlight of the preseason for Litchfield was the 42 - 8 defeat that we inflicted on Souths in our last minor round game. There was quite a bit of tension and ill feeling between our clubs at this stage and one should not underestimate the amount of motivation that our club and players were able to draw from this situation. We probably would have made it into the preseason final had it not been for a draw between Nightcliff and South Darwin which gave them both a one point advantage at the end. Nightcliff proved too good for Souths 16 - 12 in the final which was no big surprise as we had given Souths a belting the week before in the last preseason minor round match.

Our Reserve Grade made it to the Gatley Shield final by default after Souths had played an ineligible player in one of the Reserve Grade preseason minor round matches. In fact this was Jock McLeod's first game for Souths before he had applied for and obtained a clearance from Litchfield. This was a costly mistake as it not only kept Souths Reserve Grade out of the Gatley Shield final but also landed them a fine from the DRL. Nightcliff were too good for us in the Gatley Shield final as we went down 14 - 8.

By the start of the season proper, and even though they did not win the preseason final, Souths had attained the reputation as the team to beat and were the most disliked among the clubs. This position is usually reserved for the incumbent premiers and it was unusual that we were not the focus of envy and hatred from all the other clubs. Souths displayed a certain arrogance with the manner in which they had persuaded players to break club loyalties in a quest to buy a premiership. This did not sit well with many of the leagues faithful. In fact we enjoyed an under dog status and most other clubs were actually rooting for us whenever we played against Souths. We did not disappoint them as we defeated Souths in each of our minor round games.

Club loyalty is becoming a rare thing these days but without it all clubs would collapse (unless they have an endless supply of cash). If everyone went over to the most popular club there wouldn't be anyone left to play against. Every club has its turn at the bottom, we happened to be enjoying our turn at the top and it is difficult to comprehend why players who had worked so hard to get the club up to the top, would want to leave just when we finally reached the peak.

At the end of the day, the effect of the players leaving probably made us stronger as a club, as it certainly gave the ones who remained loyal, plenty of incentive, inspiration and determination to "keep the bastards honest". We had to dig deeper than ever before and new local heroes emerged, as we knew they would.

From a club point of view we had a disastrous start to the premiership proper, losing three of our first four matches. A lot of people were writing us off however we then got a 14 - 8 confidence booster against a fired up Palmerston and our first match against Souths came up in round 7. Souths were undefeated up to that stage and were hot favourites. Our club spirit was building up to boiling point for this match and we once again took them to the cleaners 22 - 10. This was a turning point for us and we realised that we were once again in full control and proceeded through the rest of the minor rounds undefeated. Local players Lloyd Pierce, Mike Cunningham, Paul Carbone, Leon Barlow and Jamie Ryan had all performed above expectations at this stage and newcomers Brad Shannon, Graham Mannix and Paul Rubie were adding a touch of class to the team. Souths recovered and also managed to dominate the other clubs for the rest of the season. In round 14, the last minor round for the season, we again defeated Souths however it was not as convincing with the scoreline at 16 - 12. Souths had led the premiership race all season and were minor premiers. We had come from near last at the end of round 4 and were now in second position. Toby Hawea had returned and young players Tony Doyle, Rhys Bradley, Mick Drury and Geoff Timms were also making regular appearances in the team. John Alder, Brad Shannon, Mark House, Mike Mendoza, Mike Cunningham, Lloyd Pierce, Paul Rubie and Leon Barlow were all in brilliant form coming into the finals.

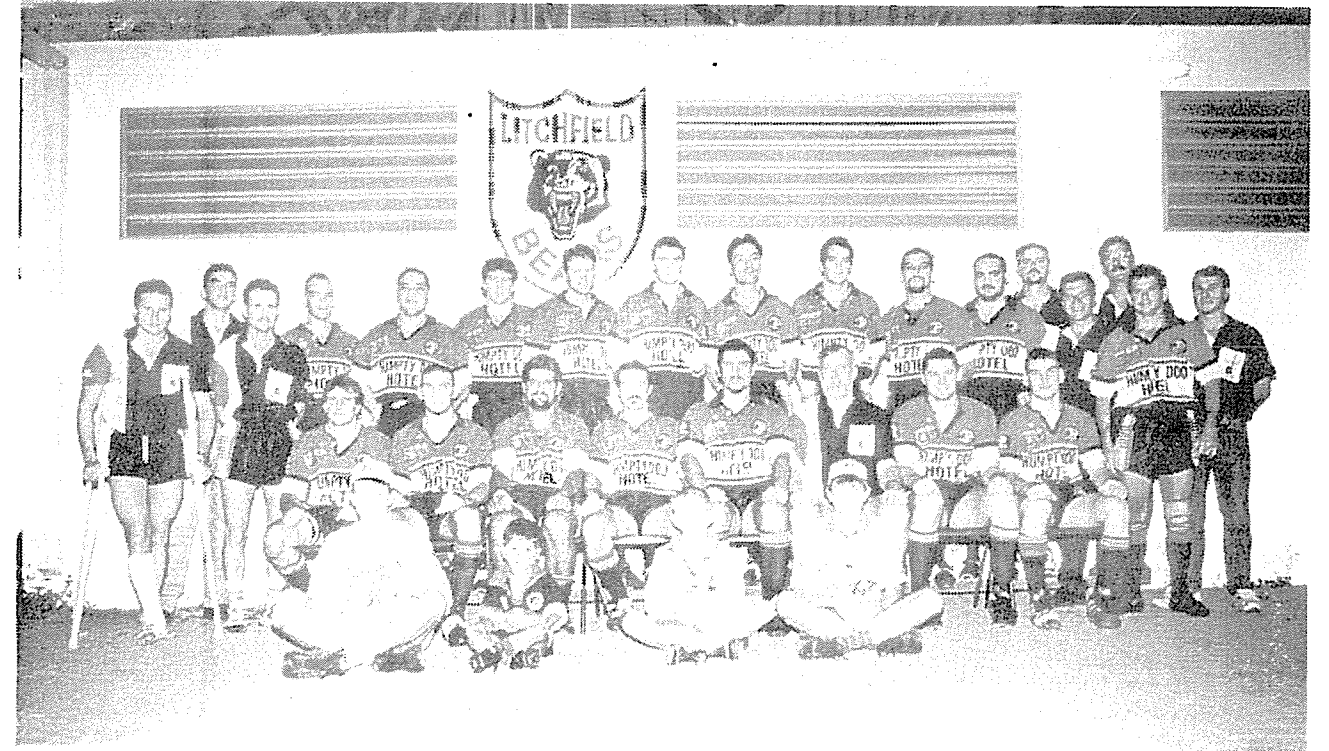
We went straight to the second semi final against Souths as hot favourites. This was the first time this season that we had been favourites against Souths. As on the previous occasions, the favourites were soundly beaten. Souths ran riot and extracted a certain amount of revenge in this game as they ran rings around us to the tune of 48 - 16. The loss ended an 18 match undefeated streak against Souths by Litchfield (in 13-a-side preseason or premiership matches) which had started in 1992. Souths were no doubt relieved, however it should be said that it got the monkey off our back as well. The pressure to keep winning against Souths was enormous and we had taken them on in every match this season as if it were a grand final. Thank goodness we had the second chance and it happened in a match that didn't eliminate us. Nightcliff easily disposed of Palmerston in the elimination semi final so we once again had to do battle with our old rivals in the preliminary final. It was pretty much an even money bet with the bookies but on the paddock there was no doubt. Litchfield recovered from the previous week to make it into the grand final against Souths. We were not so lucky in Reserve Grade as they were eliminated by Katherine.

In the build up to the grand final, the DRL held its presentation night at the casino and our club featured highly in the award presentations. Sion Leysley received the award for the highest number of goals in the Colts competition, Glenn Yetman was awarded Best & Fairest in reserve grade and John Alder won the piece de resistance by winning the Frank Johnson medal as the best and most valuable team player in Darwin. The club was also named club champions for 1996.

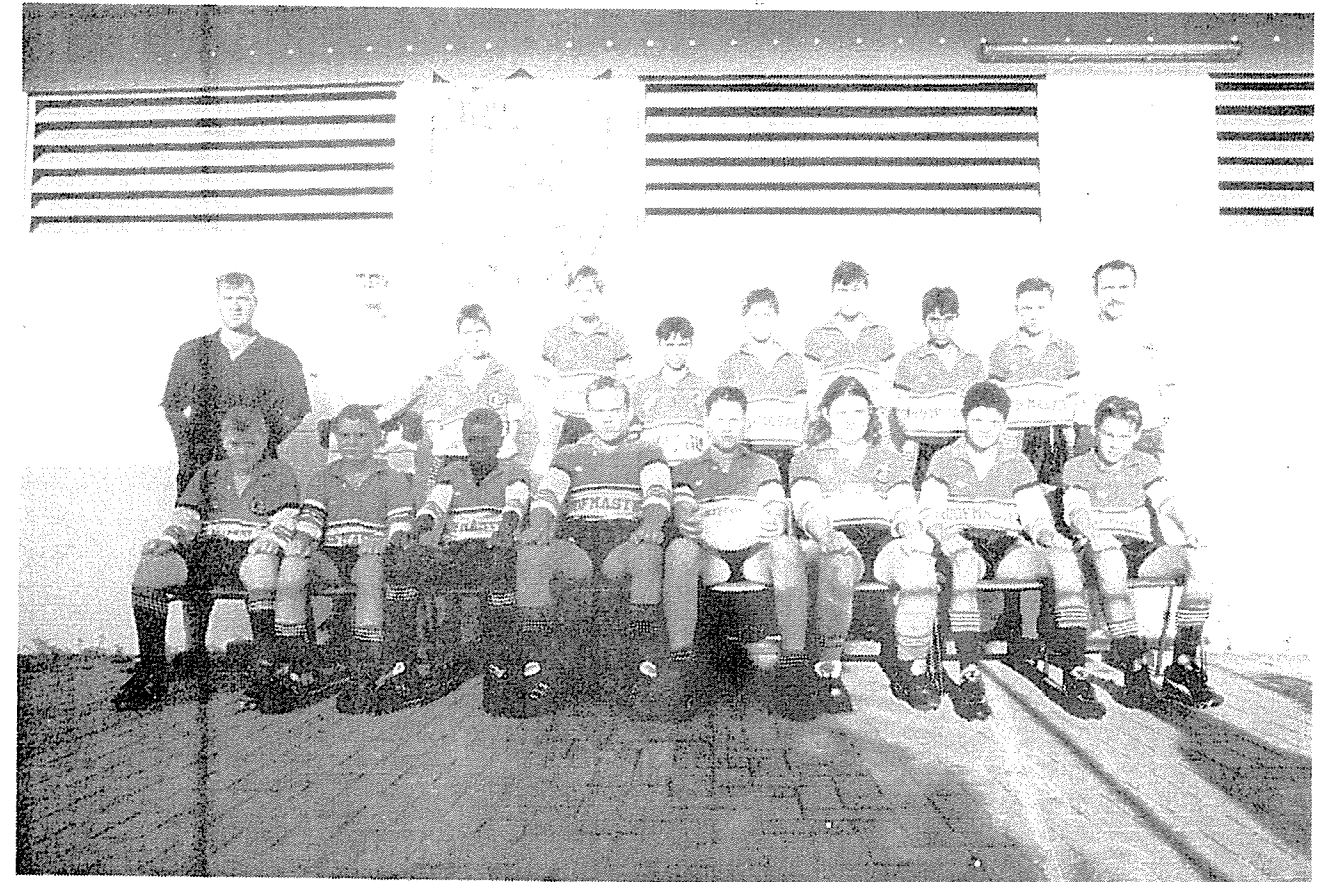
So the stage was set for a Souths v Litchfield showdown. Both clubs had dominated during the season and both were capable of winning, particularly as they were both at full strength. Souths had a team of name players and could be described as a team of champions while Litchfield was made up of mostly unknowns (until this season that is) which had developed into a champion team. As the saying goes "a champion team will always beat a team of champions" and this was once again proved on grand final day when we defeated Souths 21 - 6. It was a true fairy tale ending for us, all of our frustration's disappeared and our players became instant legends.

In the other grades, our Reserve Grade was knocked out in the Preliminary final by Katherine 18 - 14 and our Colts or U19's missed the cut and failed to make the semis.

Our U17's were knocked out in the semis also and our U15's made it into the grand final only to be beaten on the bell. The U13's ended with a great grand final win as did the U12's and U10's. The U11 were also defeated in the final after leading for much of the game. In all, the club won premierships in A Grade & U13's and were competition winners in U12 & U10's and once again Litchfield took out the club championship.



A Grade



U 13 Premiershipe Team



**LITCHFIELD RUGBY LEAGUE CLUB AWARDS FOR 1996**

**CLUB PLAYER OF THE YEAR:** Paul Rubie  
**CLUB PERSON OF THE YEAR:** Tony (Tup) Barker

	<b>A GRADE</b>	<b>RESERVE GRADE</b>	<b>UNDER 19's (Colts)</b>
<b>Coach:</b>	Dean Noble	Wayne Greenhalgh	Lindsay Leysley
Best & Fairest	John Alder	Luke Marshall	Sion Leysley
Best Forward	John Alder	Glenn Yetman	Tony Doyle
Best Back	Brad Shannon	Phil Battye	Ben Clarke
Best Defender	John Alder	Brenton Marschke	Sion Leysley
Most Hit Ups	Paul Carbone	Luke Marshall	

**JENSEN MEDAL** (Most valuable Junior player in 1996): Ben Clarke

	<b>UNDER 17's</b>	<b>UNDER 15's</b>	<b>UNDER 13's</b>
<b>Coach:</b>	Mal Tomes	Wayne Brennan	Brenton Marschke
Best & Fairest	Jamie Creagh	Luke Flemming	Luke Trahair
Best Forward	Joel Tomes	Jereimah Dagg	Matthew Henderson
Best Back	Ben Clarke	Kerry Amory	Shannon Cahill
Best Defender	Raymond Stedman	Jackson Crews	Liam McEnerney
Most Improved	Sean Meehan	Douglas Allom	Nathan Graham

	<b>UNDER 12's</b>	<b>UNDER 11's</b>	<b>UNDER 10's</b>
<b>Coach:</b>			Peter Meyering
Best & Fairest	Liam Manning	Stephen Lawford	David Meyering
Best Consistent	Brian Hardwick	Gregory Fenwick	Aaron Barnes
Most Improved	Jack Powick	Philip Twine	Jack Quinn

	<b>UNDER 9's</b>	<b>UNDER 8's</b>
<b>Coach:</b>		
Best & Fairest	Mark McCasker	Trevor Oliver
Best Consistent	Anil Shearsby	Dan Keogh
Most Improved	Stuart Goodwin	Adam Foster

	<b>UNDER 7's TEAM 1</b>	<b>UNDER 7's TEAM 2</b>	<b>UNDER 6's</b>
<b>Coach:</b>			
Best & Fairest	Michael Treloar	Jason Tomes	Brian Watts
Most Improved	Jac Ralph	Jake Barnes	Simon Treloar
Most Improved	Alex Hayden	James Henderson	Mark Rees

Talite Liavaa returned to Darwin on a short holiday at the end of the season and was a special guest at our end of season presentation night, held at the Humpty Doo Hotel. In tribute to our club, Talite presented his Tonga World Cup rep jersey to the club.

While the season was all but over for the club, one of our players had gone on to represent Australia and deserves a special mention. Sion Leysley was selected in the Aboriginal Youth Team which toured Great Britain towards the end of 1996. Sion now joins Talite Liavaa as another international player who has been connected with the club since changing its name to Litchfield. (NB A couple of other players of note who played for our club when it was known as Waratahs and went on to bigger and better things are Steve Larder who joined Illawarra and also played in England and Bruce McGuire who played for Sydney clubs Balmain and Canterbury and also represented NSW State of Origin and Australia)


Season statistics (A Grade premiership matches only)

<b>LITCHFIELD</b>	Minor round	<b>SCORE</b>	Minor round	<b>SCORE</b>
verses		Litch - Opposition		Litch - Opposition
University	1	20 - 28	8	32 - 8
Katherine	2	36 - 20	9	86 - 0
Brothers	3	14 - 16	10	16 - 10
Nightcliff	4	12 - 16	11	36 - 2
	5	bye	12	bye
Palmerston	6	14 - 8	13	26 - 12
South Darwin	7	22 - 10	14	16 - 12

Litchfield finished the minor rounds in 2<sup>nd</sup> place.  
 South Darwin defeated Litchfield 48 - 16 in the 2<sup>nd</sup> semi final.  
 Litchfield defeated Nightcliff 26 - 22 in the Preliminary Final.  
 Litchfield defeated South Darwin 21 - 6 in the Grand Final.

**DRL Awards for the season:** Glenn Yetman Reserve Grade Best and Fairest  
 John Alder Frank Johnson Medal  
 DRL Club Champions

**Senior Players who represented either Darwin or the Northern Territory:** John Alder, Mark House, Dean Noble, Mike Mendoza, Paul Rubie & Brad Shannon


and


proudly supporting the

# Litchfield Bears

Direct Sales Enquiries: **8980 2222**

New lines and proven favourites available from

## Pauls Limited

22 Bishop Street, Stuart Park, Darwin NT 0820

**CLUB HISTORY**  
EVOLUTION from the WALLABIES RLC to the LITCHFIELD RLC

SEASON YEAR	CLUB NAMING	CLUB PRESIDENT	CLUB SECRETARY	CLUB TREASURER	"A" GRADE COACH	POSITION AT END OF SEASON											PROMINENT PLAYERS FOR THE CLUB DURING EACH SEASON	YEAR					
						COMPETITION DIVISION																	
						A	B	C	W	U12	U13	U14	U15	U16	U17	U18	U19	U20	U21	U22	U23		
1950/51	WALLABIES	Fred McMahon			R. A. (Huck) Verry	1																S. Abala, C. Anderson, M. Bowen, E. Chin, Cottrell, R. Dunn, P. Fogarty, F. Geddes, Jack Gray, Henderson, L. Hill, I. Ivans, Lindloy, W. McNabb, J. Morrison, J. Piper, A. Smollet, R. Swanson, Huck Verry (c)	1950/51
1951/52	WALLABIES	Fred McMahon			R. A. (Huck) Verry	3																S. Abala, C. Anderson, Beven, Byrne, E. Chin, G. Eddie, P. Fogarty, F. Geddes, P. Harvey, Hotchin, Kent, P. Maycock, J. Pascoe, J. Piper, A. Smollet, E. Simpson, Huck Verry	1951/52
1952/53	WALLABIES	Fred McMahon			R. A. (Huck) Verry	2																R. Dixon, M. Dwyer, P. Fogarty, R. Harbourne, D. Holden, Hans Lojewski, N. McDermott, K. Pascoe, J. Piper, K. Price, Rodda, R. Stower, Huck Verry, G. West, A. Young	1952/53
1953/54	WALLABIES	Fred McMahon			R. A. (Huck) Verry	3																Baulk, Brien, W. Caleo (c), Conroy, P. Fogarty, R. Frost, M. Hunt, Hans Lojewski, S. Lynch, W. Mallee, Minnie, Newton, R. Pitt, J. Reid, S. Rogers, A. Smith, Huck Verry	1953/54
1954/55	WALLABIES	Fred McMahon			R. A. (Huck) Verry	1																Bailey, W. Bourke, K. Bowman, L. Ferguson, P. Fogarty, Kiwi Gibson, L. Hill, M. Hunt, R. Kruger, D. Kuhn, Hans Lojewski, S. Lynch, Meakin, A. Smith (c), Stevens, Thomas, L. Tinson	1954/55
1955/56	WALLABIES	Fred McMahon			R. A. (Huck) Verry	1																J. Brosnan, G. Cridland, R. Cooper, Coonan, N. Davis, R. Dunn, W. Foo, Graham, G. Huppertz, R. Kruger, Hans Lojewski, S. Lynch, McLeod, J. Morrissey, Pobjoy, J. Reid, Huck Verry (c), J. Warnsley	1955/56
1956/57	WALLABIES	Fred McMahon			R. A. (Huck) Verry	1																K. Bowman, L. Butler, G. Cridland, M. Dwyer, Graham, Irlan, G. Huppertz, G. Hunter, M. Hunt, Lucy, S. Lynch, J. Mayo, J. Morrissey, J. Piper, Pollard, Rogers (c), Huck Verry, J. Warnsley	1956/57
1957/58	WALLABIES	Fred McMahon			Kevin Radel	1																K. Bowman (c), R. Bray, L. Butler, M. Dwyer (vc), P. Fogarty, W. Foo, Graham, G. Hunter, G. Huppertz, J. Kenney, R. Kruger, H. Lewis, S. Lynch, J. Mayo, J. McInerney, R. Pitt, K. Radel, J. Stevens, J. Warnsley, W. Whittle	1957/58
1958/59	WALLABIES	Fred McMahon			Noel Turvey	3																A. Barnes (c), Baulk, Blight, Brien, L. Butler, Bowen, N. Davis, Dykes, G. Flanagan, Flynn, F. Geddes, M. Hunt, G. Hunter, Jurd, Knight, J. Mayo, McGinness, McKell, W. McLean, E. Motlop, Murphy, L. Raymond, J. Reid	1958/59
1959/60	WALLABIES	Fred McMahon			Charlie Chilly	4																J. Anderson, K. Atwell, C. Chilly (c), F. Dicker, W. Foo, B. Fraser, G. Hunter, Johnson, M. Hunt, J. Mayo, E. Motlop, K. Raymond, L. Raymond, Dave Roe, Rogan, Scott, K. Tonks	1959/60
1960/61	WALLABIES	Bob Blacker			Charlie Chilly	4																J. Anderson, Ah Wang, J. Banks, Birkell, P. Brown, Shorty Brown, C. Chilly (c), K. Cramb, B. Durrington, B. Frazer, M. Hunt, A. Jones, P. Male, J. Mayo, E. Motlop, Tony Newcastle, D. K. & L. Raymond, Dave Roe, E. Turley	1960/61
1961/62	WALLABIES	Bob Blacker			Phil De La Cruz	5																J. Anderson, G. Bircher, R. Campbell, V. Carroll, H. Chandler, C. Chilly (c), P. De La Cruz, B. Durrington, G. Hunter, M. Hunt, B. Moffat, E. Motlop, R. Nagas, T. Newcastle, D. Raymond, K. Raymond, L. Raymond	1961/62
1962/63	WALLABIES	Bob Blacker			Bruce Douglas	4																C. Barton, C. Burling, R. Campbell, D. Dalton, P. De La Cruz (c), B. Durrington, W. Douglas, Edwards, Hess, M. Hunt, Male, E. Motlop, W. Muir, R. Nagas, G. Pitt, D. K. & L. Raymond, Weldon, R. Williamson, R. Zarnke, K. Zerck	1962/63
1963/64	WALLABIES	Bob Blacker			Bruce Douglas	4																C. Barton, J. Blakley, R. Campbell, D. Carter, Crosby, Cummins, D. Dalton, Dockerty, B. Douglas (c), W. Douglas, B. Durrington, M. Hunt, E. Motlop, W. Muir, D. Raymond, V. Raymond, Shields, E. Turley, R. Ward, J. Weldon	1963/64
1964	WALLABIES	Bob Blacker			Bill Caleo	5	2															R. Allum, P. Bruce, S. Buckle, R. Campbell, D. Carter, W. Douglas, B. Durrington, G. Hunter, M. Hunt, Mallee, D. Mayo, J. Mayo, B. Maza, M. McGrade, B. Moffat, E. Motlop, W. Muir, R. Nagas(c), T. Newcastle, D. K. & L. Raymond	1964
1965	WARATAH-WALLABIES	Bob Blacker			Charlie Chilly	3	1															R. Allum, J. Angeles, F. Ah Mat, W. Ah Matt, B. Backhouse, P. Booth, B. Boyd, Bracken, N. De La Cruz, C. Douth, E. Farren, Hunt, L. James, McGrade, E. Motlop(c), G. Pitt, B. Quakawoot, D & L. Raymond, F. Taylor, R. Ward	1965
1966	WARATAH-WALLABIES	Doug Giles			Edward (Chico) Motlop	7	6															D. Bautista, B. Bottger, P. Bruce, S. Buckle, C. Chilly, Cubillo, E. Farren, G. Lew Fatt, J. Lynas, M. McGrade, E. Motlop, W. Muir, Muncie, K. Raymond, B. Slavin, F. Taylor, Alf Valentine	1966
1967	WARATAH-WALLABIES	Jack Corrick			Mike McGrade	6	8															D. Bautista, P. Chapelow, M. Dixon, R. Hackworthey, Haskins, R. Hood, R. Johnson, P. Kennedy, J. Lawton, J. Lynas, F. May, E. Motlop, L. O'Bryan, W. Roberts, G. Roe, J. Sundbye, F. Taylor, Alf Valentine, G. Van der Stoep	1967
1968	WARATAHS	Jack Corrick			Noel Turvey *	7	3															D. Bautista, A. Blanco, Dick Davis, J. Dwyer, E. Farren, D. Humphries, K. Jones, T. Jones, P. Kennedy, P. Land, M. McGrade, K. McRae, S. Nagas (c), L. O'Bryan, BoBo Simpson, J. Sundbye, Sutter, Alf Valentine	1968
1969	WARATAHS	Jim Lynas			Alan Searle	4	4															D. Bautista, R. Burt, Sandy Collinson, T. Dromgool, J. Dwyer, W. Hanson, R. Johnson, T. Jones, P. Kennedy, G. Lew Fatt, J. Masters, M. McGrade, P. Mohr, L. O'Bryan, M. Tuffin, A. Searle, P. Stewart, Alf Valentine, W. Williams	1969
1970	WARATAHS	Jim Lynas			Alan Searle	4	4															D. Bautista, De Djavarney, Tony Dromgool, B. Edwards, B. Hogan, W. Kee, J. Rae, Rassmussen, Barry Richards, M. Rowan, A. Searle, P. Stewart, T. Turner, G. Walker, W. Wellington, G. Whiting	1970
1971	WARATAHS	A.F. (Frank) MacPherson			John Maley	5	4	4														P. Albion, B. Bamford, J. Crawford, P. Edwards, C. Gill, P. Kennerdy, N. Lawrie, K. Maley, L. McNichol, L. McPhee, J. Masters, L. O'Bryan, N. Philip, Bob Richards, A. Searle, P. Stewart, B. Symons, G. Walker, Bluey Walters	1971
1972	WARATAHS	Neil Lawrie			John Maley	5	4	5														P. Albion, U. Atta, B. Bamford, D. Bauista, T. Clark, W. Ellis, J. Gibbett, J. Griffin, D. Hart, K. Hart, J. Hughes, K. Maley, G. Mitchell, L. O'Bryan, N. Philip, K. Sainsbury, N. Stewart, P. Stewart, J. Valentine, G. Walker, P. Wood	1972
1973	WARATAHS	A.F. (Frank) MacPherson			Kerry Jones	5	4	n/a														P. Albion, P. Bolton, G. Burness, J. Connel, T. Eades, P. Gamble, J. Griffin, R. Haines, R. Johnson, A. Little, D. Loveday, J. Masters, B. Malone, D. McFarlane, Bob Richards, J. Valentine, Vickery, Ward, B. Warren, P. Wood	1973
1974	WARATAHS	Jim Kuskey			John Maley	3	2	5														R. Albion, P. Appel, G. Blake, P. Bolton, P. Budd, R. Davis, A. Green, P. Goodrem, J. Hughes, R. Johnson, J. Masters, F. McCue, B. McLean, G. Paul, Bob Richards, S. Short, P. Stewart, D. Thomas, M. Thomas, P. Wood, J. Young	1974
1975	WARATAHS	Jim Kuskey			Kevin Maley	4	4															P. Albion, R. Albion, B. Barber, G. Blake, P. Bolton, J. Chee Quee, P. Conron, D. Delaney, P. Edwards, R. Jensen, F. McCue, G. McCue, G. Oats, S. Short, B. Steele, G. Theodore, D. Thomas, M. Thomas, K. Wilson, J. Young	1975
1976	WARATAHS	C. F. (Frank) May			Max Jensen	2	1															R. Albion, P. Appel, P. Budd, Bob Cope, B. Dowie, P. Hendrix, M. Hore, M. Jensen, R. Jensen, B. Kiwi, D. Latham, P. Law, F. McCue, G. McCue, G. Munga, G. Oats, S. Short, K. Smith, M. Thomas, J. Valentine	1976
1977	WARATAHS	C. F. (Frank) May			Max Jensen	4	3															D. Albion, P. Albion, A. Beasley, B. Beazley, D. Beazley, P. Bolton, P. Budd, Bob Cope, B. Dowie, P. Haney, J. Hickey, M. Hore, R. Jensen, B. Kiwi, B. McLean, D. Mortimer, G. Oats, S. Short, J. Rankine, R. Vidler, K. Wilson	1977
1978	WARATAHS	C. F. (Frank) May			Bob Dowie	1	4															R. Albion, J. Atkinson, J. Badowski, A. Beazley, B. Beazley, D. Beazley, D. Delaney, Bob Dowie, P. Gibbs, P. Haney, S. Hufnagel, R. Jensen, F. McCue, D. Mortimer, Bob Phillips, Ross Richards, J. Valentine, H. Westworth	1978
1979	WARATAHS	C. F. (Frank) May			Keith Downer	6	7															D. Albion, M. Brannelly, C. Calligeris, D. Chalker, P. Darcy, D. Delaney, Bob Dowie, P. Gibbs, R. Jensen, D. Lee, F. McCue, B. McGowan, D. Mortimer, P. Nolan, D. Panapa, Bob Phillips, Ross Richards, S. Short, J. Valentine	1979
1980	WARATAHS	C. F. (Frank) May			Doug Senior	3	3															G. Adams, D. Albion, R. Albion, J. Badowski, M. Brannelly, I. Cooper, Bob Cope, P. Gibbs, S. Hill, R. Jensen, R. Keeley, F. McCue, H. McPhee, D. Mortimer, Ross Richards, D. Senior, D. Thomas, J. Valentine	1980
1981	WARATAHS	John Lawton			Bob Dowie	1	4															R. Albion, J. Ahnfeldt, J. Badowski, J. Boyd, E. Bullen, Bill Daley, D. Delaney, B. Dowie (c), P. Hendrix, R. Hillier, R. Keeley, S. Larder, S. Lindsay, G. McCue, D. Mortimer, G. Oats, W. Payne, J. Valentine, W. Ward, J. Witten	1981
1982	WARATAHS	John Lawton			Roy Albion	5	6															D. Albion, R. Albion, S. Berneade, B. Cope, C. Claplak, D. Delaney, B. Dowie, B. Hamilton, P. Hendrix, R. Hillier, S. Larder, A. MacLeish, F. McCue, G. McCue, D. McGoughan, H. McPhee, G. Oats, D. Panapa, R. Richards	1982
1983	WARATAHS	C. F. (Frank) May			** Bob Dowie	1	1															D. Albion, R. Albion, J. Alder, P. Aratemo, J. Atkinson, J. Barry, S. Berneade, K. Blackburn, B. Brannelly, D. Delaney, B. Dowie, B. Hamilton, P. Hendrix, S. Larder, F. McCue, A. Ratulevu, G. Rau, B. Smith, D. Smith, K. Smith	1983
1984	WARATAHS	C. F. (Frank) May			Ron Nobbs	2	1	n/a														D. Albion, R. Albion, J. Alder, R. Allison, B. Banks, B. Brannelly, B. Cope, M. Donaghy, D. Firth, B. Foster, W. Greenhaugh, B. Hamilton, L. Kyriakou, S. Langford, S. Larder, J. Logan, F. McCue, B. McGuire, T. Neville, B. Smith	1984
	SOUTHERN DISTRICTS	Ron Jensen			R. Jensen/J. Boyd	n/a	n/a	3														J. Barber, J. Boyd, R. Bush, J. Fejo, M. Fejo, N. Francis, A. Garling, J. Hatch, A. Hopkins, J. Hopkins, R. Jensen, A. Liddy, G. McGinn, D. McLeod, W. McLeod, M. McMillan, I. Moran, J. Pritchard, E. Webber	"
1985	WARATAH - SOUTHERN DISTRICTS	Frank May - John Lawton			Bob Dowie	1	4	2														D. Albion, R. Albion, J. Alder, B. Brannelly, A. Cowley, Bob Dowie, B. Hamilton, B. Howe, D. Hobbs, J. Kefalianos, S. Kendall, A. Koroitamana, P. Loudon, G. Noorte, B. Smith, K. Sullivan, M. Sweeney	1985
1986	WARATAH - SOUTHERN DISTRICTS	Russel Johnson - John Lawton			Ron Nobbs	1	1	5														D. Albion, R. Albion, J. Alder, B. Brannelly, A. Cowley, G. Crane, D. Firth, W. Greenaugh, B. Howe, B. Hamilton, R. Munro, V. Nicklin, G. Osborne, K. Sullivan (c), G. Sweeney, I. Sweeney, M. Sweeney, S. Tekiri, L. Withoos	1986
1987	WARATAH - SOUTHERN DISTRICTS	John Barry - John Lawton			Bob Dowie	4	1	1														R. Albion, R. Brown, M. Burns, W. Coghon, C. Claire, R. Foster, B. Howe, C. Harris, D. Kane, R. Keeley, J. Kefalianos, M. McCarron, F. McCue, D. Price, M. Richardo, D. Smith, K. Sullivan, I. Sweeney, D. Tredgold, M. Tygh	1987
1988	WARATAH - SOUTHERN DISTRICTS	John Barry - Dave Sanders			Bob Dowie	2	2	1														R. Albion, J. Alder, M. Burns, D. Firth, R. Foster, P. Gallagher, P. Hackney, J. Harries, S. Henderson, D. Kane, R. Keeley, J. Kefalianos, M. McCarron, G. Nelson, R. Siritotis, S. Slatter, M. Sweeney, M. Taylor, M. Tygh, G. Woods	1988
1989	WARATAH - SOUTHERN DISTRICTS	Russel Johnson - Dave Sanders			Mick McCarron	2	2															T. Ayres, M. Battye, M. Burns, W. Connop, Dave Flanagan, Darren Flanagan, P. Gallagher, R. Gordon, S. Henderson, R. Keeley, J. Kefalianos, S. Lawson, J. Orrock, B. Richardson, R. Rusca, N. Russell, S. Slatter, M. Taylor	1989
1990	WARATAH - SOUTHERN DISTRICTS	Russel Johnson - Dave Sanders			Fred McCue	6	3															K. Ascoli, S. Battye, M. Burns, W. Connop, F. Carbone, R. Edwards, Dave Flanagan, Darren Flanagan, B. Flashman, P. Gallagher, J. Kefalianos, S. Lawson, J. Orrock, B. Richardson, R. Rusca, N. Russell, S. Slatter, M. Taylor	1990
1991	LITCHFIELD	Dave Sanders	Bob Foster	Jan Sanders	Graham Gow	5	6															K. Austral, L. Barlow, M. Burns, W. Connop, F. & J. Carbone, R. Church, L. Cleary, Flannagan, W. Harrison, T. Hopley, J. Kefalianos, R. Keogh, R. King, S. Lawson, B. Oakley, A. O'Brien, G. Pointing, M. Ricardo, B. Rogers, N. Russell, M. Taylor	1991
1992	LITCHFIELD	John Lawton	Dave Sanders	Jan Sanders	Ian Howcroft	2	2															K. Ascoli, L. Barlow, L. Barton, M. Burns, F. Carbone, J. Carbone, B. Evans, F. Francis, T. Goodman, I. Howcroft, R. King, J. Loveday, G. Maley, P. Maley, A. Matua, P. McGuire, A. O'Brien, M. Pitts-Brown, C. Ricketts, B. Rogers	1992
1993	LITCHFIELD	John Lawton	Dave Sanders	Jan Sanders	Ian Howcroft	4	4															J. Alder, M. Buckley, J. Carbone, L. Edmonds, M. Fitzgerald, I. Howcroft, R. Keelan, T. Liavaa, M. Mendoza, G. Maley, A. Matua, P. Matua, B. Maschke, D. Noble (c), M. Pitts-Brown, B. Richardson, B. Rogers, R. Roe, A. Taare	1993
1994	LITCHFIELD	Lyle Mackay	Dave Sanders	Jan Sanders	Dean Noble	1	2															J. Alder, R. Bradley, J. Carbone, M. Cunningham, S. Day, M. Fitzgerald, T. Hawea, M. Hebdon, M. House, R. Keelan, T. Liavaa, J. Loveday, M. Mendoza, A & P Matua, B. Maschke, D. Noble (c), B. Rogers, B. Stimson, G. Timms	1994
1995	LITCHFIELD	Lyle Mackay	Paul Albion	Sue Meyering	Dean Noble	1	4															J. Alder, J. Baker, R. Bradley, J. Carbone, C. Cochrane, M. Cunningham, M. Fitzgerald, T. Hawea, M. House, R. Keelan, T. Liavaa, M. Mendoza, P. Matua, B. Maschke, A. Mertens, S. Moyle, D. Noble (c), W. Pickering, B. Rogers, R. Sailor, G. Timms	1995
1996	LITCHFIELD	Lyle Mackay	Paul Albion	Sue Meyering	Dean Noble	1	3															J. Alder, L. Barlow, P. Battye, R. Bradley, P. Carbone, M. Cunningham, T. Doyle, M. Drury, M. Fitzgerald, T. Hawea, M. House, G. Mannix, M. Mendoza, P. Matua, B. Maschke, D. Noble (c), L. Pierce, P. Rubie, B. Shannon, G. Timms	1996
1997	LITCHFIELD	Lyle Mackay	Kathy Boyd	Henrietta Watts	Dean Noble	1	6															J. Alder (c), L. & R. Bradley, M. Buckley, J. & P. Carbone, M. Cunningham, C. Dickman, M. Drury, T. Hawea, M. House, M. Mendoza, P. Matua, B. Maschke, D	